



WARROAD INTERNATIONAL MEMORIAL AIRPORT

CITY OF WARROAD (OWNER)
WARROAD, MINNESOTA

TO BE USED AS A COMPLETE DRAWING SET FOR PLANNING PURPOSES ONLY, NOT FOR CONSTRUCTION

AIRPORT DATA SHEET

RUNWAY DATA TABLE. Table with columns: ITEM, EXISTING (E), ULTIMATE (U), CROSSWIND RUNWAY. Rows include Runway Designation, Dimensions, Length Criteria, Critical Aircraft, etc.

*FAA's official designation of the runway for AIP funding will be made at the time of federal investment
*Surface 5b represents Surface 5 from Table 3-4 in AC 150/5300-13B with visibility minimums lower than 3/4-mile

AIRPORT DATA TABLE. Table with columns: ITEM, EXISTING & ULTIMATE (E & U). Rows include Airport Reference Code, Ownership, Service Level, etc.

COORDINATE SUMMARY TABLE. Table with columns: Point, Elevation, Latitude, Longitude. Rows include ARP, Runway Intersection, Rwy 13 End, etc.

TAXIWAY DATA TABLE. Table with columns: EXISTING (E), ULTIMATE (U). Rows include Highest Airplane Design Group, Taxiway Width, etc.

- NOTES: 1. DATA USED WITHIN THIS AIRPORT LAYOUT PLAN SET IS BASED ON: -DRONE SURVEY (LIDAR) FLOWN MAY 15, 2022 BY KLJ (INCLUDES CONTOUR DATA). -USGS NATIONAL ELEVATION DATASET AT 1/3 ARC SECOND. -NOAA NATIONAL FLIGHT DATA CENTER DIGITAL OBSTACLE FILE FROM. -QUADRANGLE MAPS FROM USGS. (DATA IS ONLY AS ACCURATE AS THE SOURCES LISTED. ANY TOWERS, STRUCTURES, OR OBJECTS CONSTRUCTED AFTER THESE DATES ARE NOT REPRESENTED IN THIS AIRPORT LAYOUT PLAN SET.) 2. HORIZONTAL DATUM = NAD83(2011) MINNESOTA NORTH U.S. SURVEY FEET 3. VERTICAL DATUM = VERTICAL DATUM = NAVD 88, U.S. SURVEY FEET 4. LATITUDE & LONGITUDE CALCULATED USING CORPSCON VERSION 6.0.1.

MODIFICATION TO DESIGN STANDARDS. Table with columns: APPROVAL DATE, AIRSPACE CASE #, LOCATION, STANDARD MODIFIED, DESCRIPTION. Row: NONE EXISTING

Revision table with columns: Rev., Date, Description. Row: 1, 2024, Description

DRAFTED
MTK
REVIEWED
ARTZ
PROJECT NUMBER
2205-00198

SHEET
2



WARROAD INTERNATIONAL MEMORIAL AIRPORT
CITY OF WARROAD (OWNER)
WARROAD, MINNESOTA

**AIRPORT LAYOUT PLAN DRAWING
(EXISTING & ULTIMATE)**

DRAFTED
TLG/MTK
REVIEWED
ARTZ
PROJECT NUMBER
2205-00198

SHEET
3

TO BE USED AS A COMPLETE DRAWING SET FOR PLANNING PURPOSES ONLY, NOT FOR CONSTRUCTION

- NOTES:**
- SEE SHEET 2 FOR AIRPORT & RUNWAY DATA TABLES.
 - SEE INNER APPROACH SHEETS FOR OBSTACLE DATA.
 - WIND SENSOR LOCATION (U)
 - OBJECTS WITHIN 500' MUST REMAIN 15' BELOW WIND SENSOR.
 - OBJECTS 500'-1000' MUST REMAIN 10' BELOW WIND SENSOR.
 - SEE SHEET 6 FOR BUILDING DATA TABLE.
 - HEIGHT OF IT-OFZ BEGINS AT 50 FEET.

LEGEND

EXISTING (E)	ITEM	ULTIMATE (U)
---	BUILDING RESTRICTION LINE (BRL)	---
---	RUNWAY OBJECT FREE AREA (OFA)	---
---	RUNWAY SAFETY AREA (RSA)	---
---	TAXIWAY OBJECT FREE AREA (TOFA)	---
---	N/A	---
---	BUILDING/BUILDING LOT	---
---	AIRSIDE PAVED SURFACE	---
---	LANDSIDE ROAD/PARKING	---
---	TURF RUNWAY/TAXIWAY	---
---	UNPAVED SURFACE (GRAVEL)	NONE
---	DECIDUOUS/EVERGREEN TREE	NONE
---	TREE ROWS, BUSHES	NONE
---	BARBED WIRE FENCE	---
---	CHAIN WIRE FENCE	---
---	WILDLIFE FENCE	---
---	POWER POLE/LIGHT POLE	---
---	AIRPLANE TIEDOWN	---
---	RUNWAY/THRESHOLD LIGHT	---
---	TAXIWAY LIGHT/TAXIWAY REFLECTOR	---
---	AIRPORT/DISTANCE TO GO SIGN	---
---	CULVERT WITH END SECTION	---
---	N/A	---
---	BUILDING/PAVEMENT TO BE REMOVED	---
---	AIRPORT PROPERTY	---
---	AIRPORT EASEMENT	---

COORDINATE SUMMARY TABLE

Point	Elevation	Latitude	Longitude
ARP	N/A	N 48° 56' 29.28"	W 95° 20' 54.46"
RUNWAY INTERSECTION	1073.8'	N 48° 56' 37.1083"	W 95° 21' 03.8816"
Rwy 13 End	1072.5'	N 48° 56' 45.5403"	W 95° 21' 15.1706"
Rwy 31 End	1074.3'	N 48° 56' 06.577"	W 95° 20' 21.6744"
Rwy 13 & 31 TDZE	1075.5'	N 48° 56' 26.1832"	W 95° 20' 49.2555"
Rwy 4 End	1073.1'	N 48° 56' 24.967"	W 95° 21' 20.2027"
Rwy 22 End	1069.9'	N 48° 56' 47.0237"	W 95° 20' 50.5385"
Rwy 4 & 22 TDZE	1073.9'	N 48° 56' 36.9874"	W 95° 21' 04.0444"

RWY = Runway ARP = Airport Reference Point TDZE = Touchdown Zone Elevation
Airport Elevation = 1075.5'

RUNWAY DATA TABLE

ITEM	PRIMARY RUNWAY		CROSSWIND RUNWAY			
	EXISTING (E)	ULTIMATE (U)	EXISTING & ULTIMATE (E & U)			
RUNWAY DESIGNATION	13	31	13	31	4	22
RUNWAY DIMENSIONS	5400' x 100'	5400' x 100'	5400' x 100'	5400' x 100'	2987' x 150'	2987' x 150'
RUNWAY GRADIENT	0.030%	0.030%	0.030%	0.030%	0.111%	0.111%
RUNWAY LIGHTING	HIRL	HIRL	HIRL	HIRL	NONE	NONE
PAVEMENT TYPE	BITUMINOUS	BITUMINOUS	BITUMINOUS	BITUMINOUS	TURF	TURF
RUNWAY CATEGORY	OTHER-THAN-UTILITY	OTHER-THAN-UTILITY	OTHER-THAN-UTILITY	OTHER-THAN-UTILITY	UTILITY	UTILITY
RUNWAY SAFETY AREA (RSA)	6600' x 300'	6600' x 300'	6600' x 300'	6600' x 300'	3467' x 120'	3467' x 120'
RUNWAY OBJECT FREE AREA (OFA)	6600' x 800'	6600' x 800'	6600' x 800'	6600' x 800'	3467' x 250'	3467' x 250'
RUNWAY OBSTACLE FREE ZONE (OFZ)	5800' x 400'	5800' x 400'	5800' x 400'	5800' x 400'	3387' x 250'	3387' x 250'
VISUAL AND INSTRUMENT NAVAIDS (NAVAIDS)	PAPI, MALSR, GPS	PAPI, MALSR, GPS, GS, LOC	PAPI, MALSR, GPS	PAPI, MALSR, GPS, GS, LOC	-	-
TAKEOFF RUNWAY AVAILABLE (TORA)	5400'	5400'	5400'	5400'	2987'	2987'
TAKEOFF DISTANCE AVAILABLE (TODA)	5400'	5400'	5400'	5400'	2987'	2987'
ACCELERATED STOP DISTANCE AVAILABLE (ASD)	5400'	5400'	5400'	5400'	2987'	2987'
LANDING DISTANCE AVAILABLE (LDA)	5400'	5400'	5400'	5400'	2987'	2987'

TAXIWAY DATA TABLE

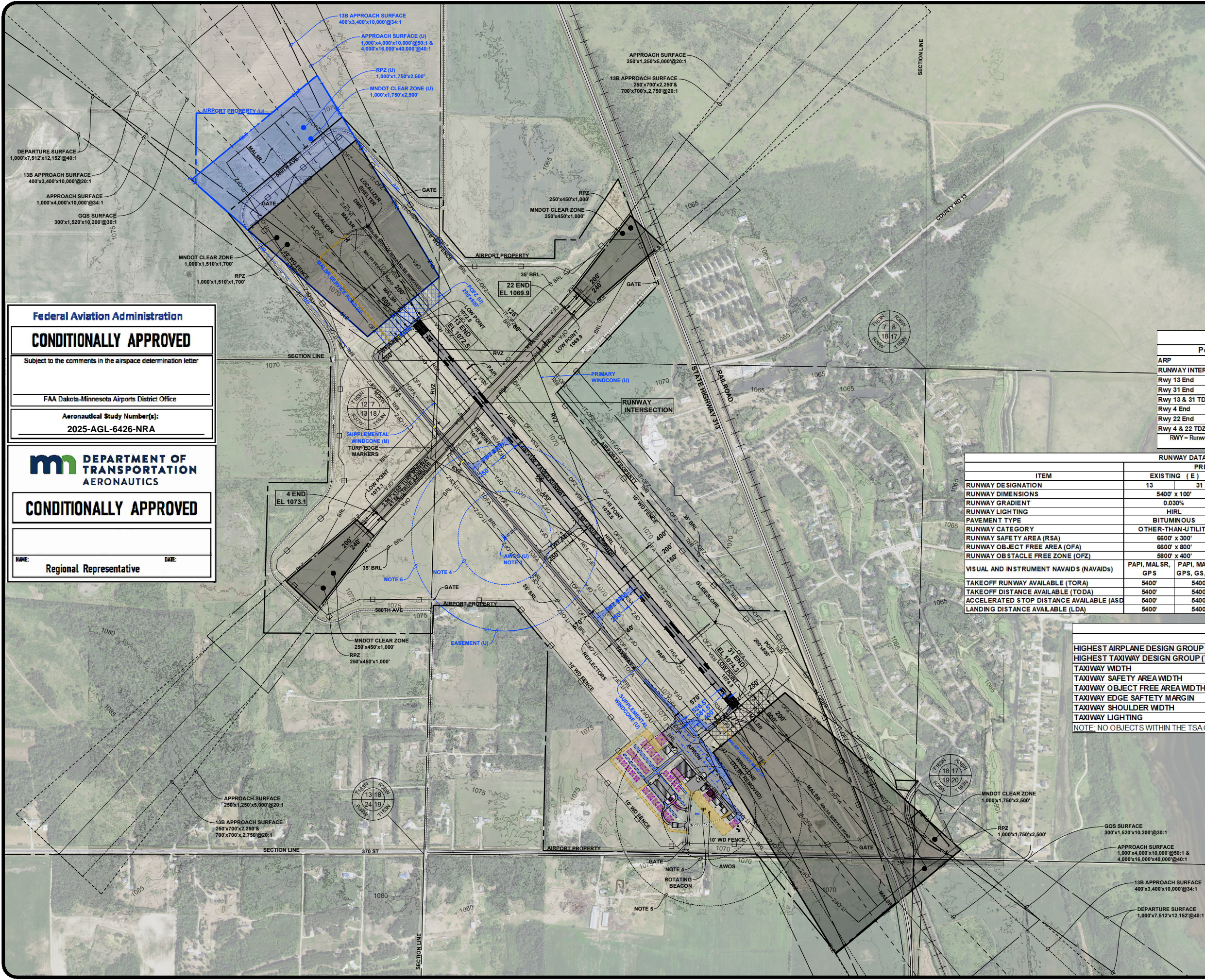
	EXISTING (E)	ULTIMATE (U)
HIGHEST AIRPLANE DESIGN GROUP (ADG)	II	II
HIGHEST TAXIWAY DESIGN GROUP (TDG)	2A	2A
TAXIWAY WIDTH	40'	40'
TAXIWAY SAFETY AREA WIDTH	79'	79'
TAXIWAY OBJECT FREE AREA WIDTH	124'	124'
TAXIWAY EDGE SAFETY MARGIN	7.5'	7.5'
TAXIWAY SHOULDER WIDTH	15'	15'
TAXIWAY LIGHTING	REFLECTORS	MITL

NOTE: NO OBJECTS WITHIN THE TSA OR TOFA OF ALL TAXIWAYS

TRUE NORTH
MAGNETIC DECLINATION
1.38°E (2025)

500 0 500 1000
scale feet

Rev.	Date	Description



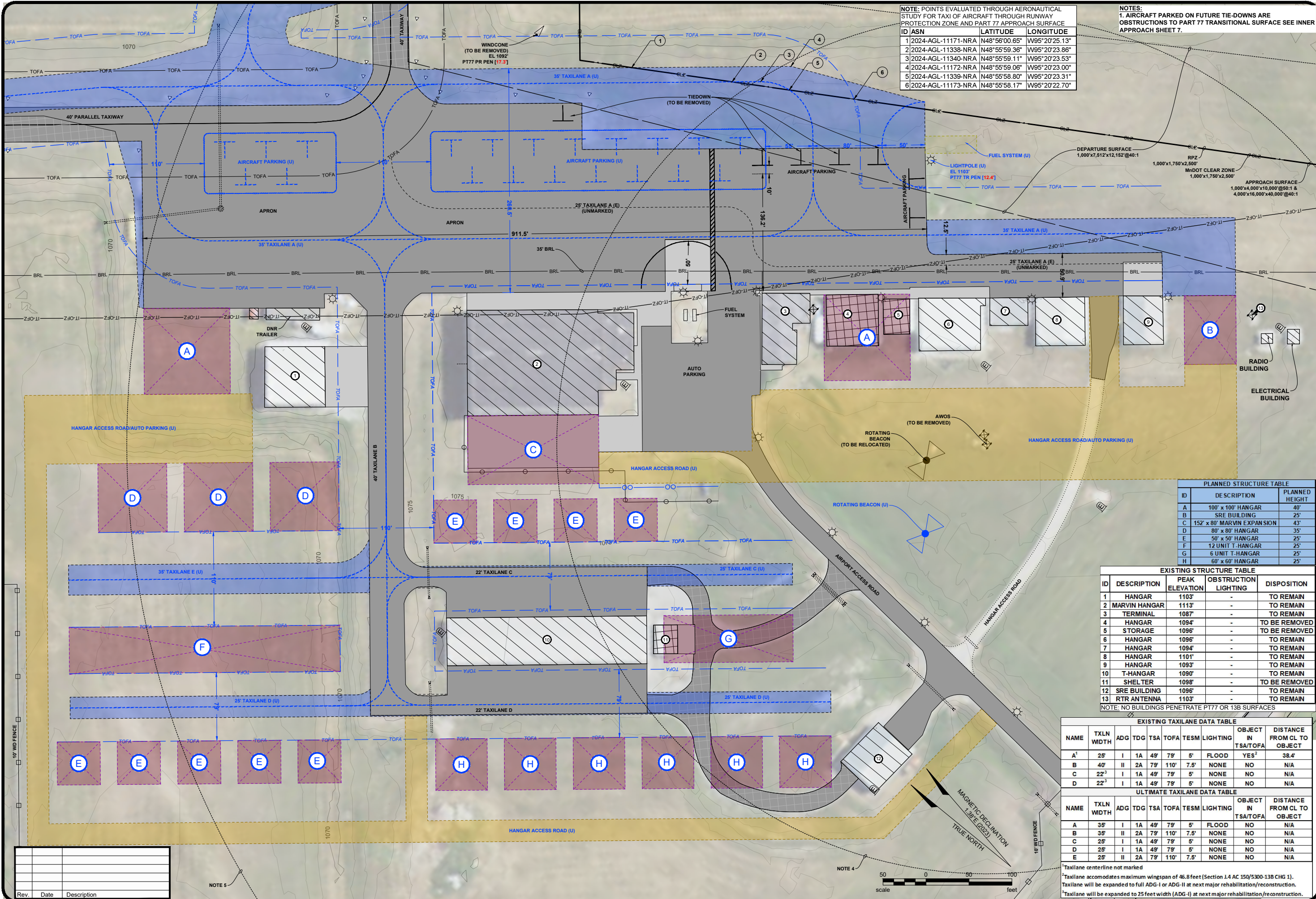
Federal Aviation Administration
CONDITIONALLY APPROVED
Subject to the comments in the airspace determination letter

FAA Dakota-Minnesota Airports District Office

Aeronautical Study Number(s):
2025-AGL-6426-NRA

mm DEPARTMENT OF TRANSPORTATION AERONAUTICS
CONDITIONALLY APPROVED

NAME: _____ DATE: _____
Regional Representative



NOTE: POINTS EVALUATED THROUGH AERONAUTICAL STUDY FOR TAXI OF AIRCRAFT THROUGH RUNWAY PROTECTION ZONE AND PART 77 APPROACH SURFACE

ID	ASN	LATITUDE	LONGITUDE
1	2024-AGL-11171-NRA	N48°56'00.65"	W95°20'25.13"
2	2024-AGL-11338-NRA	N48°55'59.36"	W95°20'23.86"
3	2024-AGL-11340-NRA	N48°55'59.11"	W95°20'23.53"
4	2024-AGL-11172-NRA	N48°55'59.06"	W95°20'23.00"
5	2024-AGL-11339-NRA	N48°55'58.80"	W95°20'23.31"
6	2024-AGL-11173-NRA	N48°55'58.17"	W95°20'22.70"

NOTES:
 1. AIRCRAFT PARKED ON FUTURE TIE-DOWNS ARE OBSTRUCTIONS TO PART 77 TRANSITIONAL SURFACE SEE INNER APPROACH SHEET 7.

PLANNED STRUCTURE TABLE

ID	DESCRIPTION	PLANNED HEIGHT
A	100' x 100' HANGAR	40'
B	SRE BUILDING	25'
C	152' x 80' MARVIN EXPANSION	43'
D	80' x 80' HANGAR	35'
E	50' x 50' HANGAR	25'
F	12 UNIT T-HANGAR	25'
G	6 UNIT T-HANGAR	25'
H	60' x 60' HANGAR	25'

EXISTING STRUCTURE TABLE

ID	DESCRIPTION	PEAK ELEVATION	OBSTRUCTION LIGHTING	DISPOSITION
1	HANGAR	1103'	-	TO REMAIN
2	MARVIN HANGAR	1113'	-	TO REMAIN
3	TERMINAL	1087'	-	TO REMAIN
4	HANGAR	1094'	-	TO BE REMOVED
5	STORAGE	1096'	-	TO BE REMOVED
6	HANGAR	1096'	-	TO REMAIN
7	HANGAR	1094'	-	TO REMAIN
8	HANGAR	1101'	-	TO REMAIN
9	HANGAR	1093'	-	TO REMAIN
10	T-HANGAR	1090'	-	TO REMAIN
11	SHELTER	1098'	-	TO BE REMOVED
12	SRE BUILDING	1096'	-	TO REMAIN
13	RTR ANTENNA	1103'	-	TO REMAIN

NOTE: NO BUILDINGS PENETRATE P77 OR 13B SURFACES

EXISTING TAXILANE DATA TABLE

NAME	TXLN WIDTH	ADG	TDG	TSA	TOFA	TESM	LIGHTING	OBJECT IN TSA/TOFA	DISTANCE FROM CL TO OBJECT
A ¹	25'	I	1A	49'	79'	5'	FLOOD	YES ²	38.4'
B	40'	II	2A	79'	110'	7.5'	NONE	NO	N/A
C	22 ³	I	1A	49'	79'	5'	NONE	NO	N/A
D	22 ³	I	1A	49'	79'	5'	NONE	NO	N/A

ULTIMATE TAXILANE DATA TABLE

NAME	TXLN WIDTH	ADG	TDG	TSA	TOFA	TESM	LIGHTING	OBJECT IN TSA/TOFA	DISTANCE FROM CL TO OBJECT
A	35'	I	1A	49'	79'	5'	FLOOD	NO	N/A
B	35'	II	2A	79'	110'	7.5'	NONE	NO	N/A
C	25'	I	1A	49'	79'	5'	NONE	NO	N/A
D	25'	I	1A	49'	79'	5'	NONE	NO	N/A
E	25'	II	2A	79'	110'	7.5'	NONE	NO	N/A

¹Taxilane centerline not marked
²Taxilane accommodates maximum wingspan of 46.8 feet (Section J.4.C 150/5300-13B CHG 1).
 Taxilane will be expanded to full ADG-I or ADG-II at next major rehabilitation/reconstruction.
³Taxilane will be expanded to 25 feet width (ADG-I) at next major rehabilitation/reconstruction.

Rev.	Date	Description



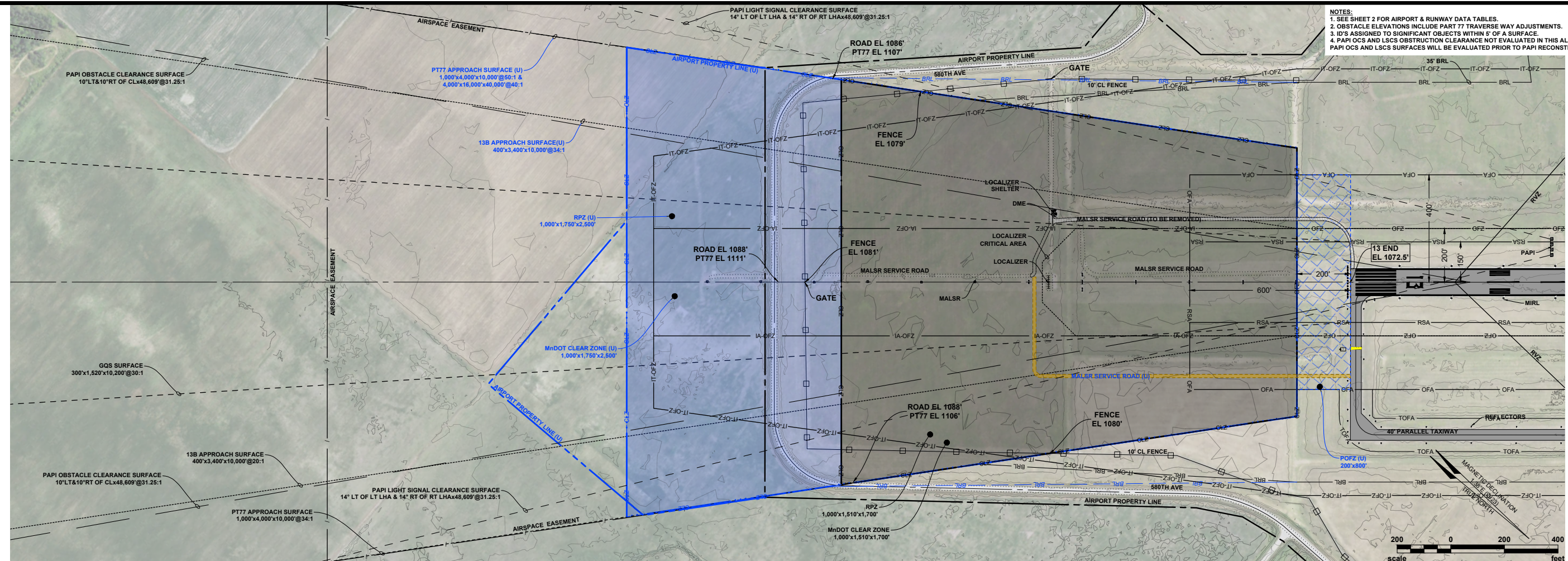
WARROAD INTERNATIONAL MEMORIAL AIRPORT
CITY OF WARROAD (OWNER)
WARROAD, MINNESOTA

TO BE USED AS A COMPLETE DRAWING SET FOR PLANNING PURPOSES ONLY, NOT FOR CONSTRUCTION

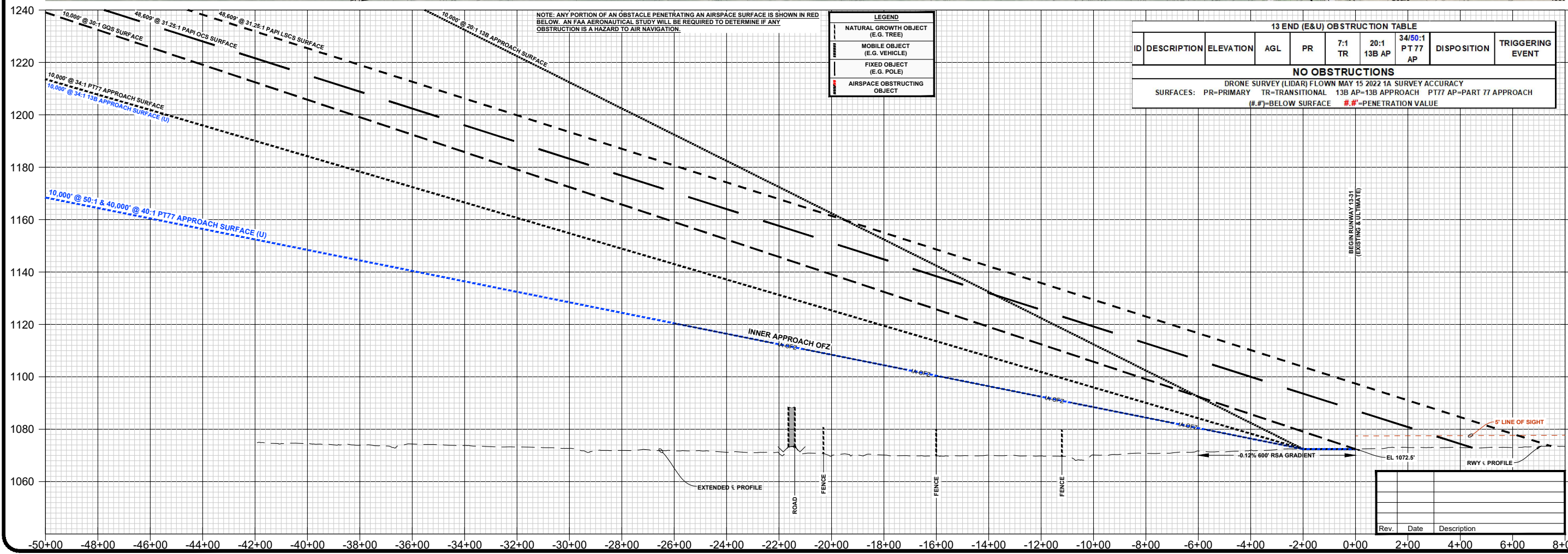
**INNER PORTION OF THE APPROACH SURFACE
RUNWAY 13 END**

DRAFTED
MTK/TLG
REVIEWED
ARTZ
PROJECT NUMBER
2205-00198

SHEET
5



- NOTES:
- SEE SHEET 2 FOR AIRPORT & RUNWAY DATA TABLES.
 - OBSTACLE ELEVATIONS INCLUDE PART 77 TRAVERSE WAY ADJUSTMENTS.
 - D'S ASSIGNED TO SIGNIFICANT OBJECTS WITHIN 5' OF A SURFACE.
 - PAPI OCS AND LSCS OBSTRUCTION CLEARANCE NOT EVALUATED IN THIS ALP. PAPI OCS AND LSCS SURFACES WILL BE EVALUATED PRIOR TO PAPI RECONSTRUCTION





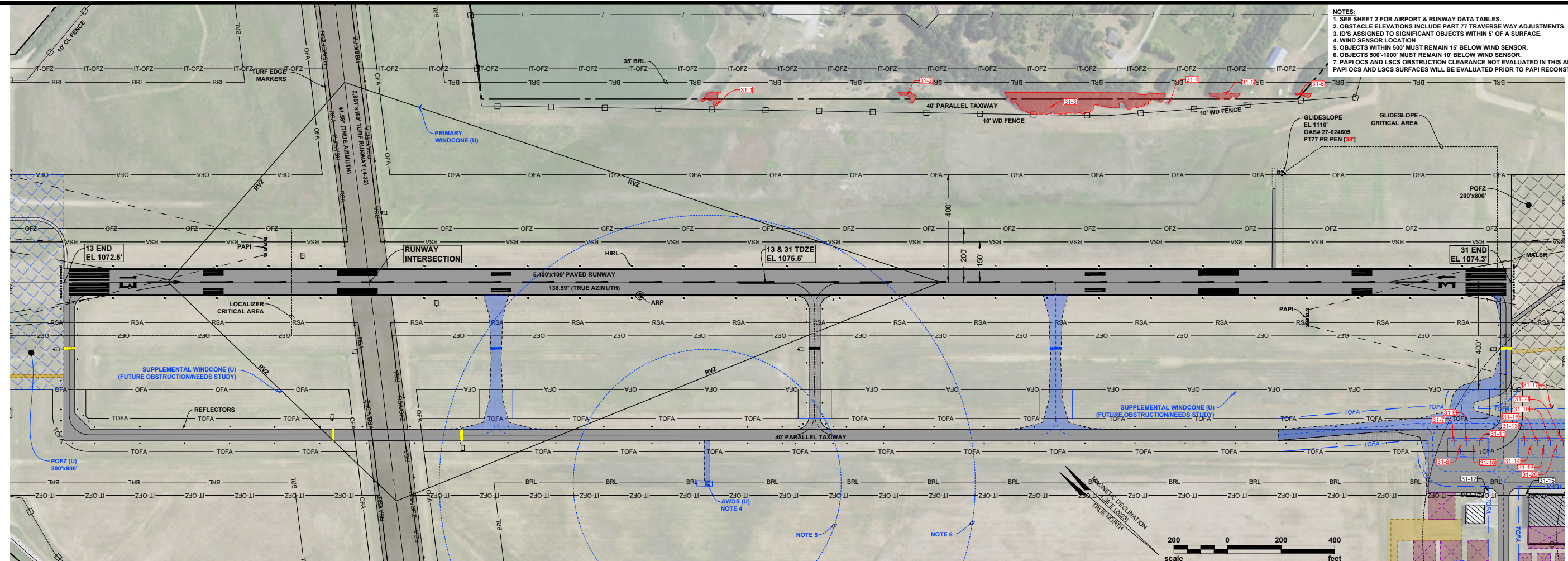
WARROAD INTERNATIONAL MEMORIAL AIRPORT
 CITY OF WARROAD (OWNER)
 WARROAD, MINNESOTA

**INNER PORTION OF THE APPROACH SURFACE
 RUNWAY 13-31**

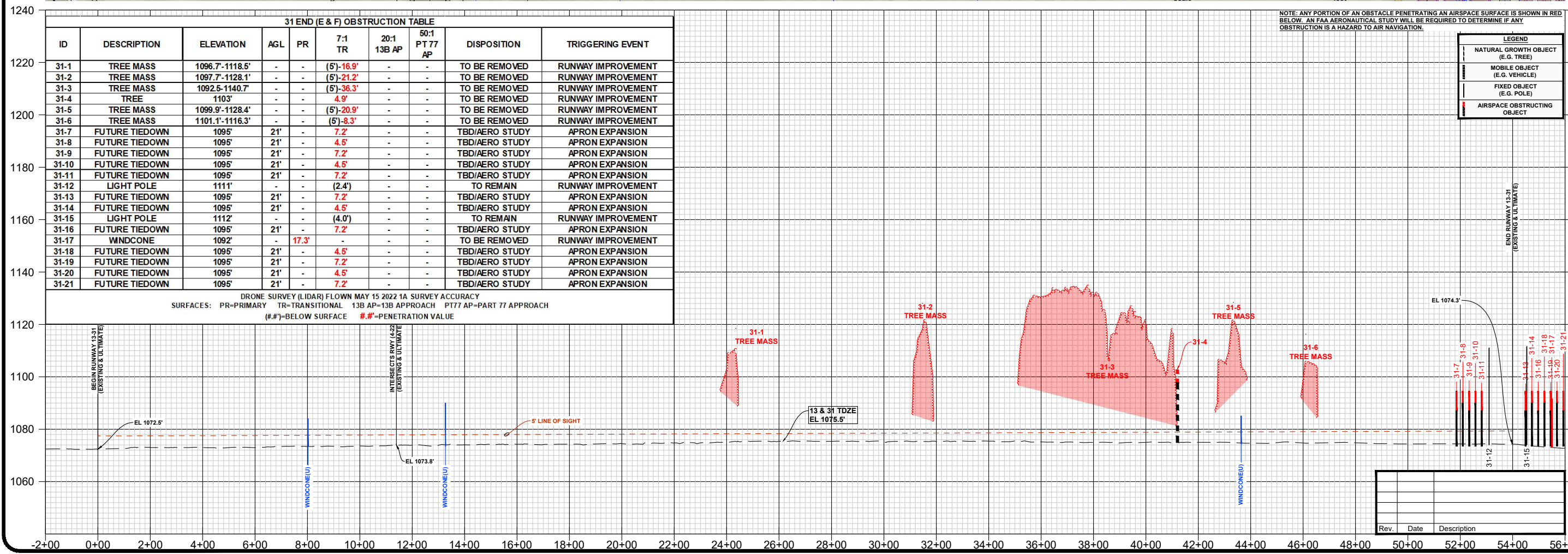
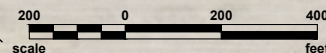
DRAFTED
 MTK/TLG
 REVIEWED
 ARTZ
 PROJECT NUMBER
 2205-00198

SHEET
6

TO BE USED AS A COMPLETE DRAWING SET FOR PLANNING PURPOSES ONLY, NOT FOR CONSTRUCTION



- NOTES:
- SEE SHEET 2 FOR AIRPORT & RUNWAY DATA TABLES.
 - OBSTACLE ELEVATIONS INCLUDE PART 77 TRAVERSE WAY ADJUSTMENTS.
 - IDS ASSIGNED TO SIGNIFICANT OBJECTS WITHIN 5' OF A SURFACE.
 - WIND SENSOR LOCATION
 - OBJECTS WITHIN 500' MUST REMAIN 15' BELOW WIND SENSOR.
 - OBJECTS 500'-1000' MUST REMAIN 10' BELOW WIND SENSOR.
 - PAPI OCS AND LSCS OBSTRUCTION CLEARANCE NOT EVALUATED IN THIS ALP. PAPI OCS AND LSCS SURFACES WILL BE EVALUATED PRIOR TO PAPI RECONSTRUCTION



NOTE: ANY PORTION OF AN OBSTACLE PENETRATING AN AIRSPACE SURFACE IS SHOWN IN RED BELOW. AN FAA AERONAUTICAL STUDY WILL BE REQUIRED TO DETERMINE IF ANY OBSTRUCTION IS A HAZARD TO AIR NAVIGATION.

LEGEND

- NATURAL GROWTH OBJECT (E.G. TREE)
- MOBILE OBJECT (E.G. VEHICLE)
- FIXED OBJECT (E.G. POLE)
- AIRSPACE OBSTRUCTING OBJECT

Rev.	Date	Description



WARROAD INTERNATIONAL MEMORIAL AIRPORT
 CITY OF WARROAD (OWNER)
 WARROAD, MINNESOTA

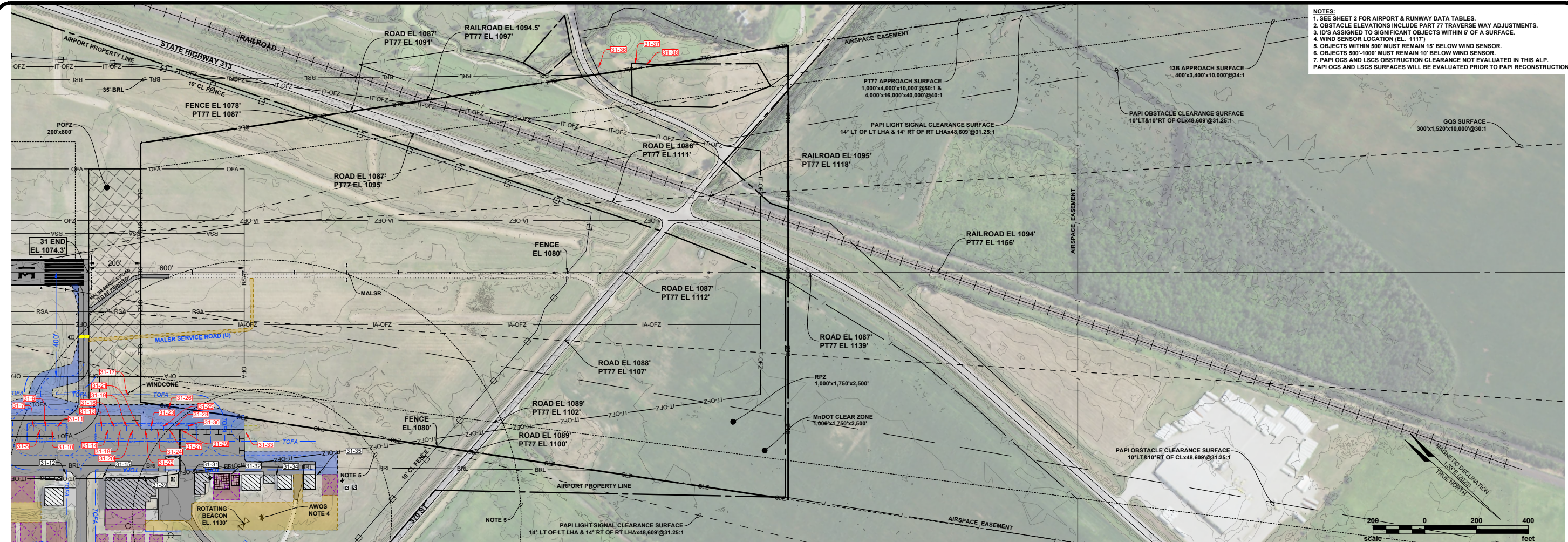
TO BE USED AS A COMPLETE DRAWING SET FOR PLANNING PURPOSES ONLY, NOT FOR CONSTRUCTION

**INNER PORTION OF THE APPROACH SURFACE
 RUNWAY 31 END**

DRAFTED
 MTK/TLG
 REVIEWED
 ARTZ
 PROJECT NUMBER
 2205-00198

SHEET
7

- NOTES:
- SEE SHEET 2 FOR AIRPORT & RUNWAY DATA TABLES.
 - OBSTACLE ELEVATIONS INCLUDE PART 77 TRAVERSE WAY ADJUSTMENTS.
 - ID'S ASSIGNED TO SIGNIFICANT OBJECTS WITHIN 5' OF A SURFACE.
 - WIND SENSOR LOCATION (EL. 1117)
 - OBJECTS WITHIN 500' MUST REMAIN 15' BELOW WIND SENSOR.
 - OBJECTS 500'-1000' MUST REMAIN 10' BELOW WIND SENSOR.
 - PAPI OCS AND LSCS OBSTRUCTION CLEARANCE NOT EVALUATED IN THIS ALP. PAPI OCS AND LSCS SURFACES WILL BE EVALUATED PRIOR TO PAPI RECONSTRUCTION



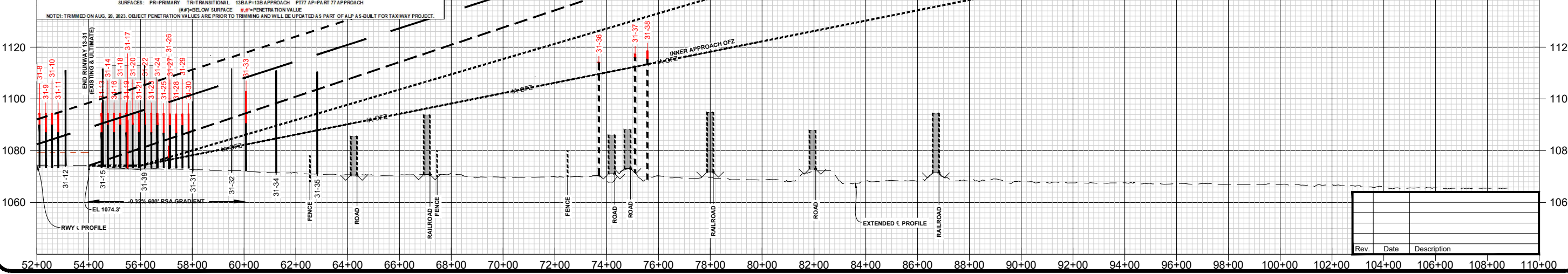
31 END (E & F) OBSTRUCTION TABLE

ID	DESCRIPTION	ELEVATION	AGL	PR	7:1 TR	20:1 TR	50:1 TR	PT 77 AP	DISPOSITION	TRIGGERING EVENT
31-7	FUTURE TIEDOWN	1099'	21'	-	7.2'	-	-	-	TBDAERO STUDY	APRON EXPANSION
31-8	FUTURE TIEDOWN	1099'	21'	-	4.5'	-	-	-	TBDAERO STUDY	APRON EXPANSION
31-9	FUTURE TIEDOWN	1099'	21'	-	7.2'	-	-	-	TBDAERO STUDY	APRON EXPANSION
31-10	FUTURE TIEDOWN	1099'	21'	-	4.5'	-	-	-	TBDAERO STUDY	APRON EXPANSION
31-11	FUTURE TIEDOWN	1099'	21'	-	7.2'	-	-	-	TBDAERO STUDY	APRON EXPANSION
31-12	LIGHT POLE	1111'	-	-	7.2'	-	-	-	TO REMAIN	RUNWAY IMPROVEMENT
31-13	FUTURE TIEDOWN	1099'	21'	-	7.2'	-	-	-	TBDAERO STUDY	APRON EXPANSION
31-14	FUTURE TIEDOWN	1099'	21'	-	4.5'	-	-	-	TBDAERO STUDY	APRON EXPANSION
31-15	LIGHT POLE	1112'	-	-	(4.0')	-	-	-	TO REMAIN	RUNWAY IMPROVEMENT
31-16	FUTURE TIEDOWN	1099'	21'	-	7.2'	-	-	-	TBDAERO STUDY	APRON EXPANSION
31-17	WINDCONE	1092'	-	-	17.3'	-	-	-	TO BE REMOVED	RUNWAY IMPROVEMENT
31-18	FUTURE TIEDOWN	1099'	21'	-	4.5'	-	-	-	TBDAERO STUDY	APRON EXPANSION
31-19	FUTURE TIEDOWN	1099'	21'	-	7.2'	-	-	-	TBDAERO STUDY	APRON EXPANSION
31-20	FUTURE TIEDOWN	1099'	21'	-	4.5'	-	-	-	TBDAERO STUDY	APRON EXPANSION
31-21	FUTURE TIEDOWN	1099'	21'	-	7.2'	-	-	-	TBDAERO STUDY	APRON EXPANSION
31-22	FUTURE TIEDOWN	1099'	21'	-	4.5'	-	-	-	TBDAERO STUDY	APRON EXPANSION
31-23	FUTURE TIEDOWN	1094'	21'	-	7.2'	-	-	-	TBDAERO STUDY	APRON EXPANSION
31-24	FUTURE TIEDOWN	1094'	21'	-	4.4'	-	-	-	TBDAERO STUDY	APRON EXPANSION
31-25	FUTURE TIEDOWN	1094'	21'	-	7.1'	-	-	-	TBDAERO STUDY	APRON EXPANSION
31-26	WIND SCULPTURE	1082'	-	-	4.7'	-	-	-	TO BE REMOVED	RUNWAY IMPROVEMENT
31-27	FUTURE TIEDOWN	1094'	21'	-	4.4'	-	-	-	TBDAERO STUDY	APRON EXPANSION
31-28	FUTURE TIEDOWN	1094'	21'	-	7.1'	-	-	-	TBDAERO STUDY	APRON EXPANSION
31-29	FUTURE TIEDOWN	1094'	21'	-	4.4'	-	-	-	TBDAERO STUDY	APRON EXPANSION
31-30	FUTURE TIEDOWN	1094'	21'	-	7.2'	-	-	-	TBDAERO STUDY	APRON EXPANSION
31-31	LIGHT POLE	1111'	-	-	(1.0')	-	-	-	TO REMAIN	RUNWAY IMPROVEMENT
31-32	LIGHT POLE	1112'	-	-	(1.5')	-	-	-	TO REMAIN	RUNWAY IMPROVEMENT
31-33	FUTURE LIGHT POLE	1103'	30'	-	12.4'	-	-	-	TO REMAIN	APRON EXPANSION
31-34	LIGHT POLE	1111'	-	-	(2.0')	-	-	-	TO REMAIN	RUNWAY IMPROVEMENT
31-35	LIGHT POLE	1110'	-	-	(2.7')	-	-	-	TO REMAIN	RUNWAY IMPROVEMENT
31-36	TREE	1114'	-	-	0.2'	-	-	-	TRIMMED 2023	SEE NOTE 1
31-37	TREE	1117'	-	-	1.6'	-	-	-	TRIMMED 2023	SEE NOTE 1
31-38	TREE	1119'	-	-	3.4'	-	-	-	TRIMMED 2023	SEE NOTE 1
31-39	MARVIN HANGAR	1112'	-	-	(3.9')	-	-	-	TO REMAIN	NA

NOTE: ANY PORTION OF AN OBSTACLE PENETRATING AN AIRSPACE SURFACE IS SHOWN IN RED BELOW. AN FAA AERONAUTICAL STUDY WILL BE REQUIRED TO DETERMINE IF ANY OBSTRUCTION IS A HAZARD TO AIR NAVIGATION.

LEGEND

- NATURAL GROWTH OBJECT (E.G. TREE)
- MOBILE OBJECT (E.G. VEHICLE)
- FIXED OBJECT (E.G. POLE)
- AIRSPACE OBSTRUCTING OBJECT



Rev.	Date	Description



WARROAD INTERNATIONAL MEMORIAL AIRPORT
 CITY OF WARROAD (OWNER)
 WARROAD, MINNESOTA

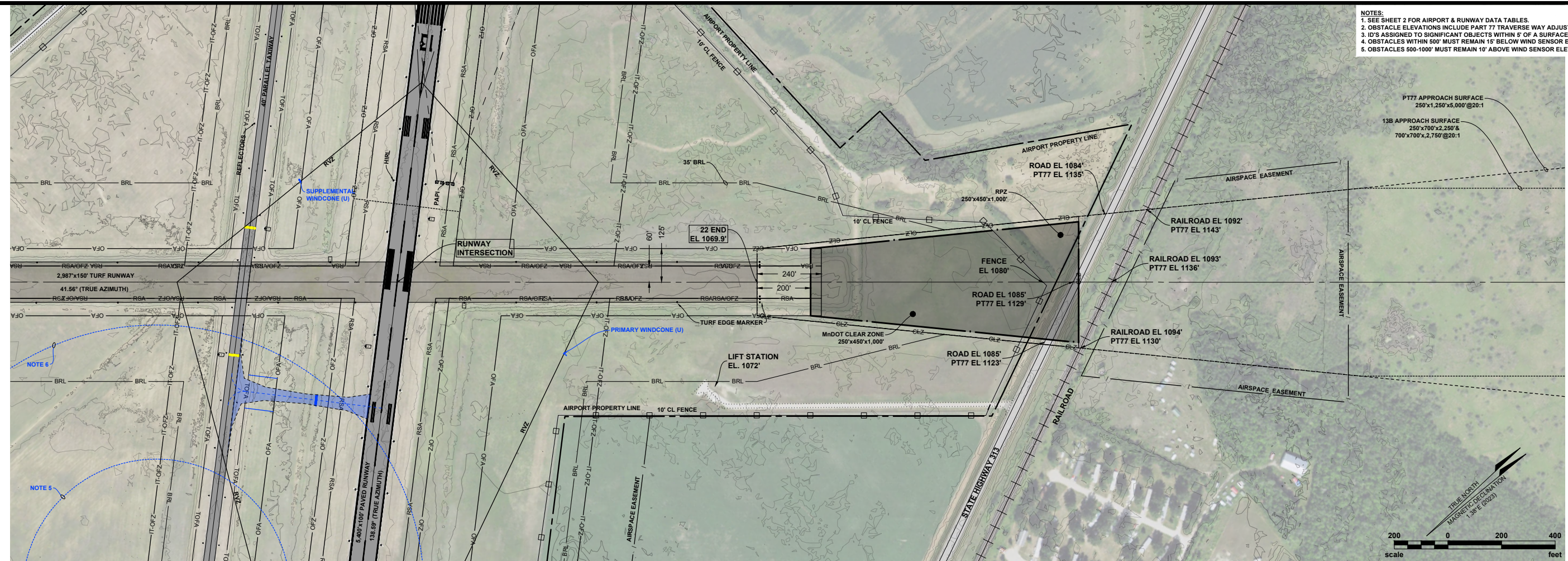
**INNER PORTION OF THE APPROACH SURFACE
 RUNWAY 22 END**

DRAFTED
 MTK/TLG
 REVIEWED
 ARTZ
 PROJECT NUMBER
 2205-00198

SHEET
9

TO BE USED AS A COMPLETE DRAWING SET FOR PLANNING PURPOSES ONLY, NOT FOR CONSTRUCTION

- NOTES:
 1. SEE SHEET 2 FOR AIRPORT & RUNWAY DATA TABLES.
 2. OBSTACLE ELEVATIONS INCLUDE PART 77 TRAVERSE WAY ADJUSTMENTS.
 3. ID'S ASSIGNED TO SIGNIFICANT OBJECTS WITHIN 5' OF A SURFACE.
 4. OBSTACLES WITHIN 500' MUST REMAIN 15' BELOW WIND SENSOR ELEVATION.
 5. OBSTACLES 500-1000' MUST REMAIN 10' ABOVE WIND SENSOR ELEVATION.



RWY 22 END OBSTRUCTION TABLE

OBSTACLE DATA		EXISTING (E)			OBSTACLE RESOLUTION					
ID	DESCRIPTION	ELEVATION	AGL	PR	7:1 TR	20:1 AP	20:1 PT	77 AP	TRIGGERING EVENT	DISPOSITION
NO OBSTACLES										
DRONE SURVEY (LIDAR) FLOWN MAY 15 2022 1A SURVEY ACCURACY										
SURFACES: PR-PRIMARY TR-TRANSITIONAL 13B AP-13B APPROACH PT77 AP-PART 77 APPROACH										
(##) = BELOW SURFACE #.# = PENETRATION VALUE										



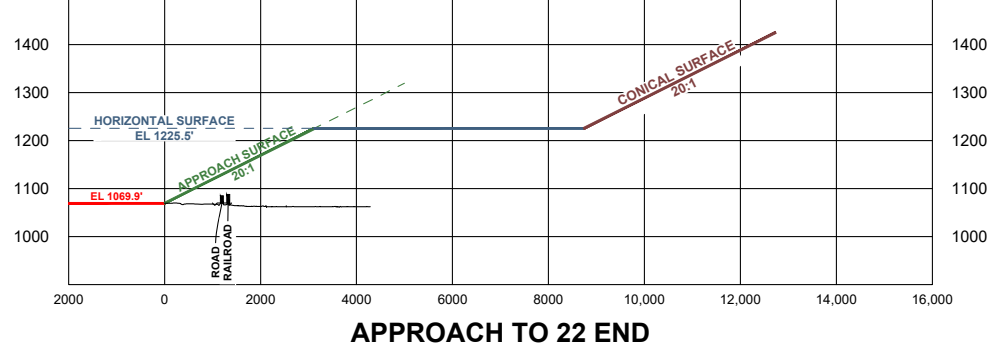
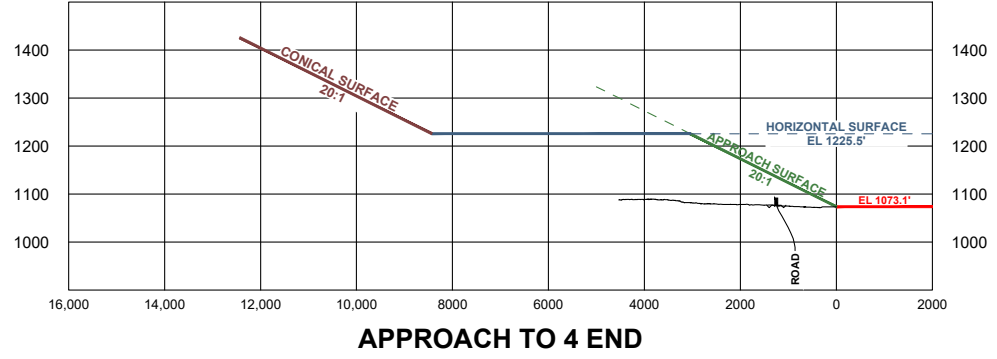
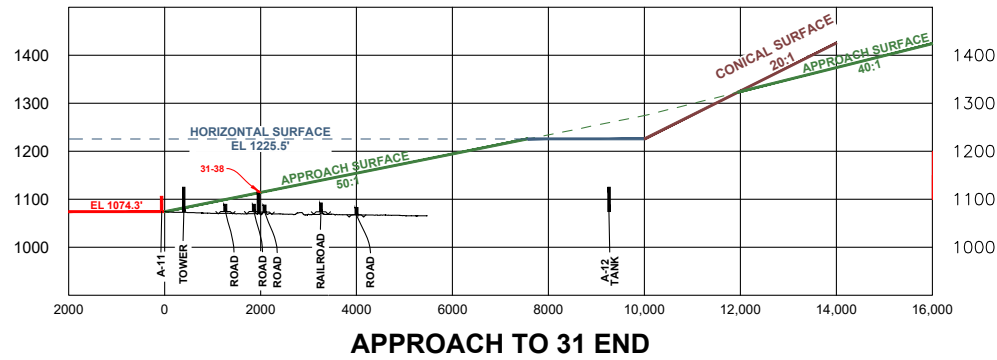
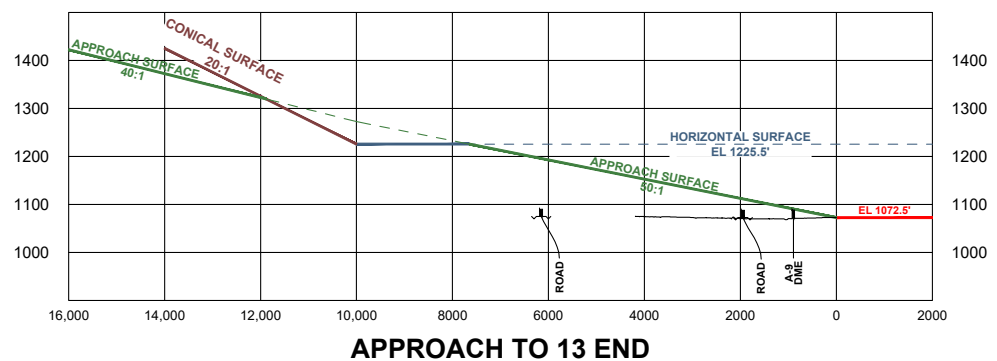
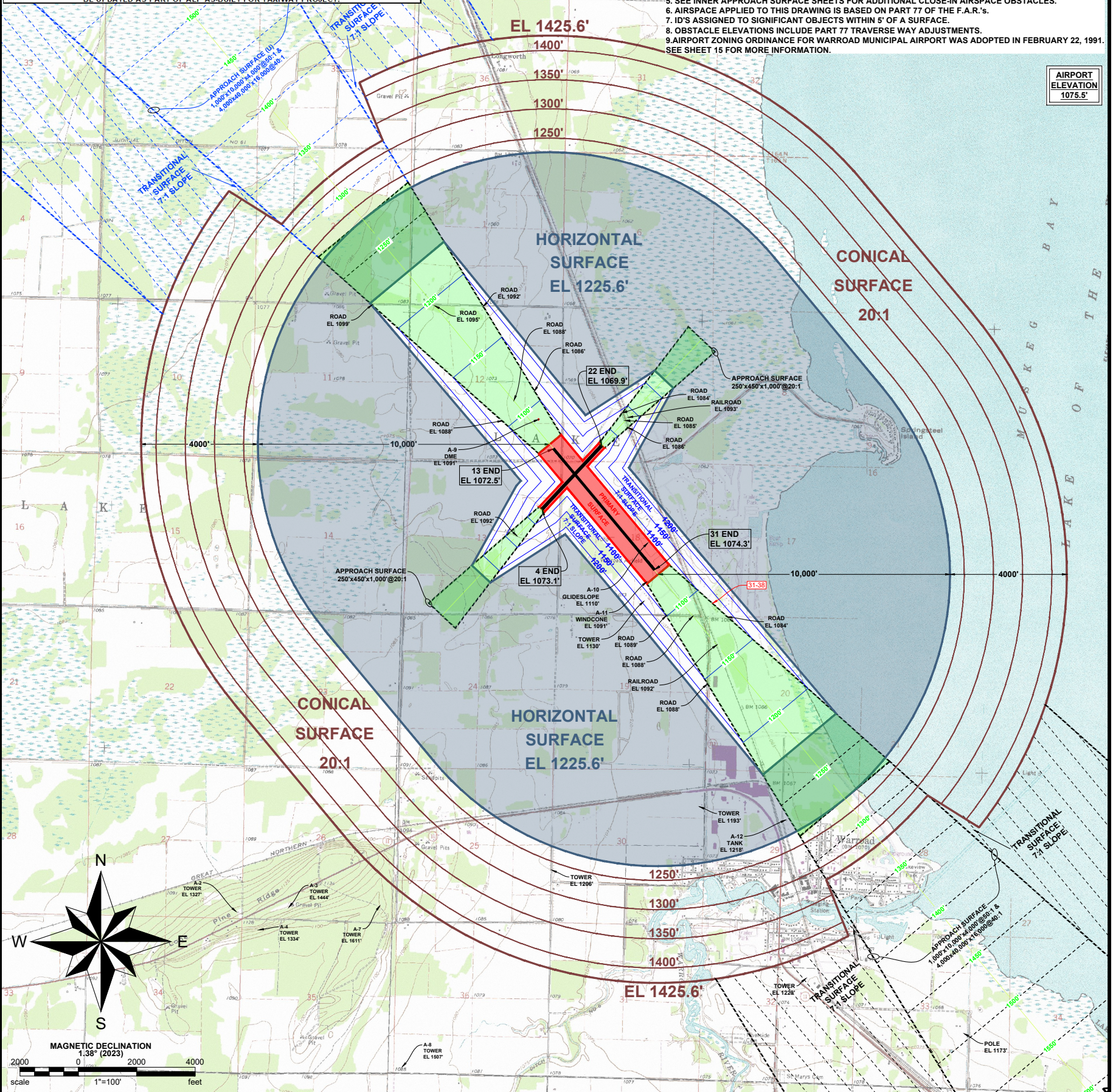
NOTE: ANY PORTION OF AN OBSTACLE PENETRATING AN AIRSPACE SURFACE IS SHOWN IN RED BELOW. AN FAA AERONAUTICAL STUDY WILL BE REQUIRED TO DETERMINE IF ANY OBSTRUCTION IS A HAZARD TO AIR NAVIGATION.

Rev.	Date	Description

PT 77 (E & U) OBSTRUCTION TABLE						
ID	DESCRIPTION	ELEVATION	AGL	PR	TR	TRIGGERING EVENT
31-38	TREE	1119'	-	-	3.4'	SEE NOTE 1

DRONE SURVEY (LIDAR) FLOWN MAY 15, 2022
 SURFACES: PR=PRIMARY TR=TRANSITIONAL PT77 AP=PART 77 APPROACH
 (#.#)-BELOW SURFACE #.#-PENETRATION VALUE
 NOTE 1: TRIMMED ON AUG. 28, 2023. OBJECT PENETRATION VALUES ARE PRIOR TO TRIMMING AND WILL BE UPDATED AS PART OF ALP AS BUILT FOR TAXIWAY PROJECT.

UNITE NOTES:
 1. DATA USED WITHIN THIS AIRPORT LAYOUT PLAN SET IS BASED ON:
 -DRONE SURVEY (LIDAR) FLOWN MAY 15, 2022 BY KLJ (INCLUDES CONTOUR DATA).
 -USGS NATIONAL ELEVATION DATASET AT 1/3 ARC SECOND.
 -FAA OAS DIGITAL OBSTACLE FILE (DOF), UPDATED DEC 24 2023.
 -QUADRANGLE MAPS FROM USGS.
 (DATA IS ONLY AS ACCURATE AS THE SOURCES LISTED. ANY TOWERS, STRUCTURES, OR OBJECTS CONSTRUCTED AFTER THESE DATES ARE NOT REPRESENTED IN THIS AIRPORT LAYOUT PLAN SET.)
 2. HORIZONTAL DATUM = NAD83(2011) MINNESOTA NORTH U.S. SURVEY FEET
 3. VERTICAL DATUM = VERTICAL DATUM = NAVD 88, U.S. SURVEY FEET
 4. SEE SHEET 2 FOR AIRPORT & RUNWAY DATA TABLES.
 5. SEE INNER APPROACH SURFACE SHEETS FOR ADDITIONAL CLOSE-IN AIRSPACE OBSTACLES.
 6. AIRSPACE APPLIED TO THIS DRAWING IS BASED ON PART 77 OF THE F.A.R.'S.
 7. ID'S ASSIGNED TO SIGNIFICANT OBJECTS WITHIN 5' OF A SURFACE.
 8. OBSTACLE ELEVATIONS INCLUDE PART 77 TRAVERSE WAY ADJUSTMENTS.
 9. AIRPORT ZONING ORDINANCE FOR WARROAD MUNICIPAL AIRPORT WAS ADOPTED IN FEBRUARY 22, 1991. SEE SHEET 15 FOR MORE INFORMATION.



DOF OBSTRUCTION TABLE						
ID	DESCRIPTION	ELEVATION	PART 77 SURFACE	PENETRATION VALUE	DISPOSITION	OAS NUMBER/ ASN
A-2	TOWER	1327'	N/A	-	TO REMAIN	27-000402
A-3	TOWER	1444'	N/A	-	TO REMAIN	27-000221
A-4	TOWER	1334'	N/A	-	TO REMAIN	27-000233
A-7	TOWER	1611'	N/A	-	TO REMAIN	0003-OE-600-OE 27-000453
A-8	TOWER	1507'	N/A	-	TO REMAIN	2017-AGL-21452-OE 27-001547
A-9	NAVIGATION AID (DME)	1091'	APPROACH	(5.0')	TO REMAIN	27-024604
A-10	TOWER (GLIDE SLOPE)	1110'	PRIMARY	38.0'	TO REMAIN/ STUDY	27-024605
A-11	POLE (WINDCONE)	1091'	PRIMARY	19.0'	TO REMAIN/ STUDY	27-024606
A-12	TANK	1218'	HORIZONTAL	(7.0')	TO REMAIN	27-000978 2006-AGL-4556-OE

SEE INNER APPROACH SURFACE SHEETS FOR ADDITIONAL CLOSE-IN AIRSPACE OBSTACLES.
 #.# = PENETRATES SURFACE (#.#) = BELOW SURFACE

WARROAD INTERNATIONAL MEMORIAL AIRPORT
 CITY OF WARROAD (OWNER)
 WARROAD, MINNESOTA

AIRPORT AIRSPACE (ULTIMATE)

DRAFTED
 MTK/TLG
 REVIEWED
 ARTZ
 PROJECT NUMBER
 2205-00198

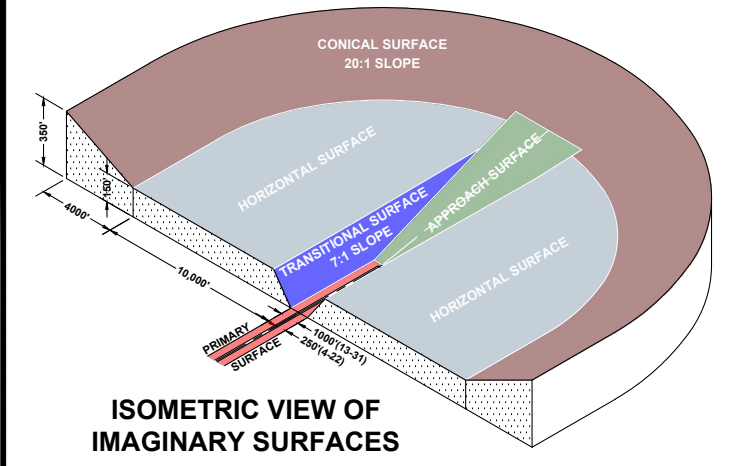
SHEET
10

TO BE USED AS A COMPLETE DRAWING SET FOR PLANNING PURPOSES ONLY, NOT FOR CONSTRUCTION

© KLJ 2023

- NOTES:**
1. DATA USED WITHIN THIS AIRPORT LAYOUT PLAN SET IS BASED ON:
- DRONE SURVEY (LIDAR) FLOWN MAY 15, 2022 BY KLJ (INCLUDES CONTOUR DATA).
- USGS NATIONAL ELEVATION DATASET AT 1/3 ARC SECOND.
- FAA OAS DIGITAL OBSTACLE FILE (DOF), UPDATED DEC 24 2023
- QUADRANGLE MAPS FROM USGS.
(DATA IS ONLY AS ACCURATE AS THE SOURCES LISTED. ANY TOWERS, STRUCTURES, OR OBJECTS CONSTRUCTED AFTER THESE DATES ARE NOT REPRESENTED IN THIS AIRPORT LAYOUT PLAN SET.)
 2. HORIZONTAL DATUM = NAD83(2011) MINNESOTA NORTH U.S. SURVEY FEET
 3. VERTICAL DATUM = VERTICAL DATUM = NAVD 88, U.S. SURVEY FEET
 4. SEE SHEET 2 FOR AIRPORT & RUNWAY DATA TABLES.
 5. SEE INNER APPROACH SURFACE SHEETS FOR ADDITIONAL CLOSE-IN AIRSPACE OBSTACLES.
 6. AIRSPACE APPLIED TO THIS DRAWING IS BASED ON PART 77 OF THE F.A.R.'s.
 7. ID'S ASSIGNED TO SIGNIFICANT OBJECTS WITHIN 5' OF A SURFACE.
 8. OBSTACLE ELEVATIONS INCLUDE PART 77 TRAVERSE WAY ADJUSTMENTS.
 9. AIRPORT ZONING ORDINANCE FOR WARROAD MUNICIPAL AIRPORT WAS ADOPTED IN FEBRUARY 22, 1991. SEE SHEET 15 FOR MORE INFORMATION.

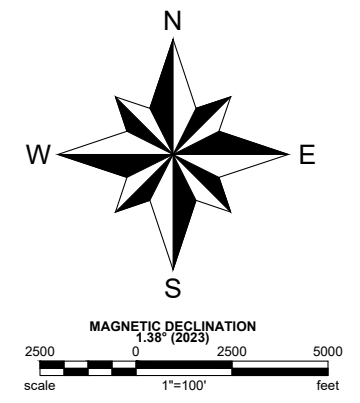
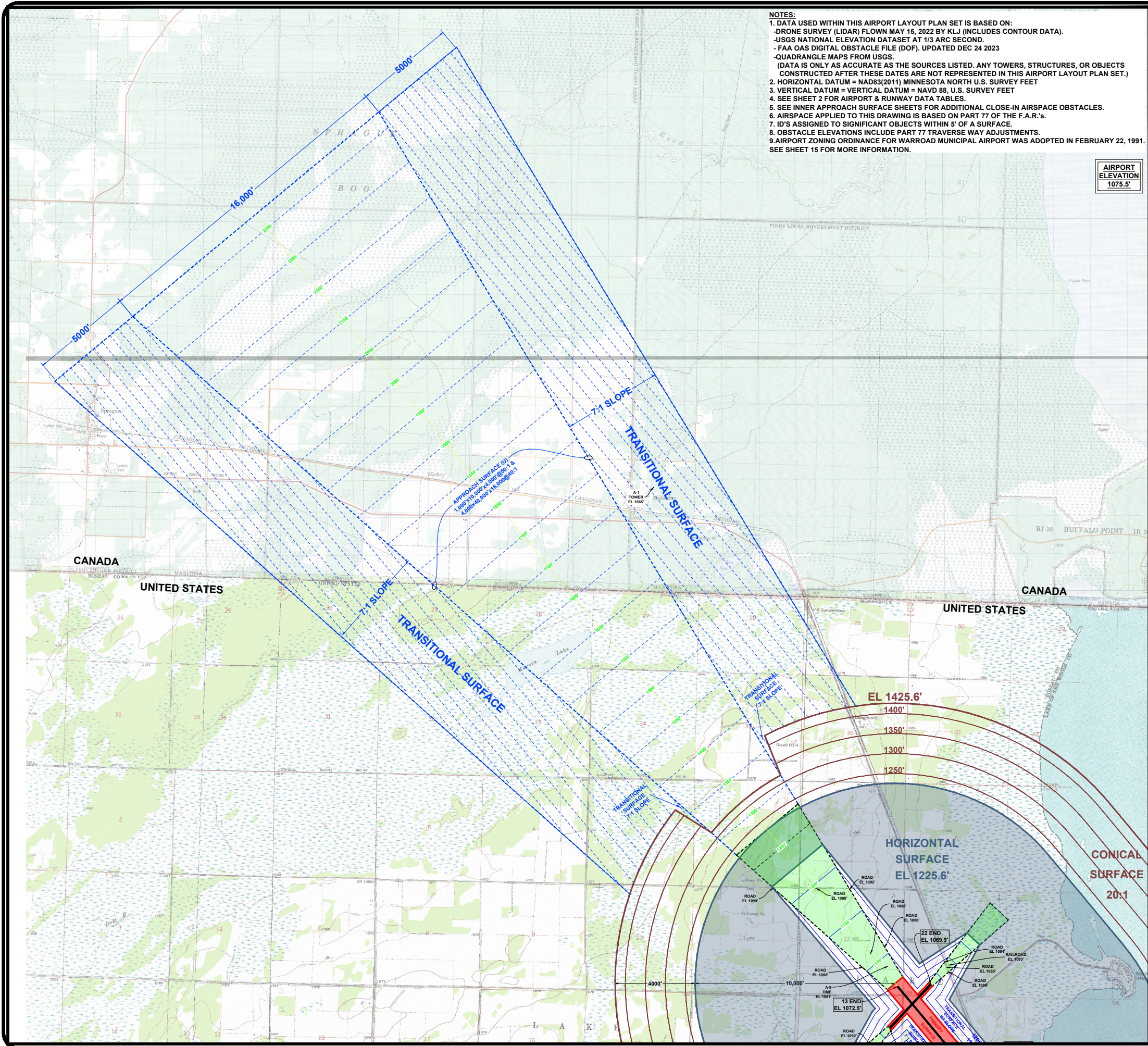
AIRPORT ELEVATION 1075.5'



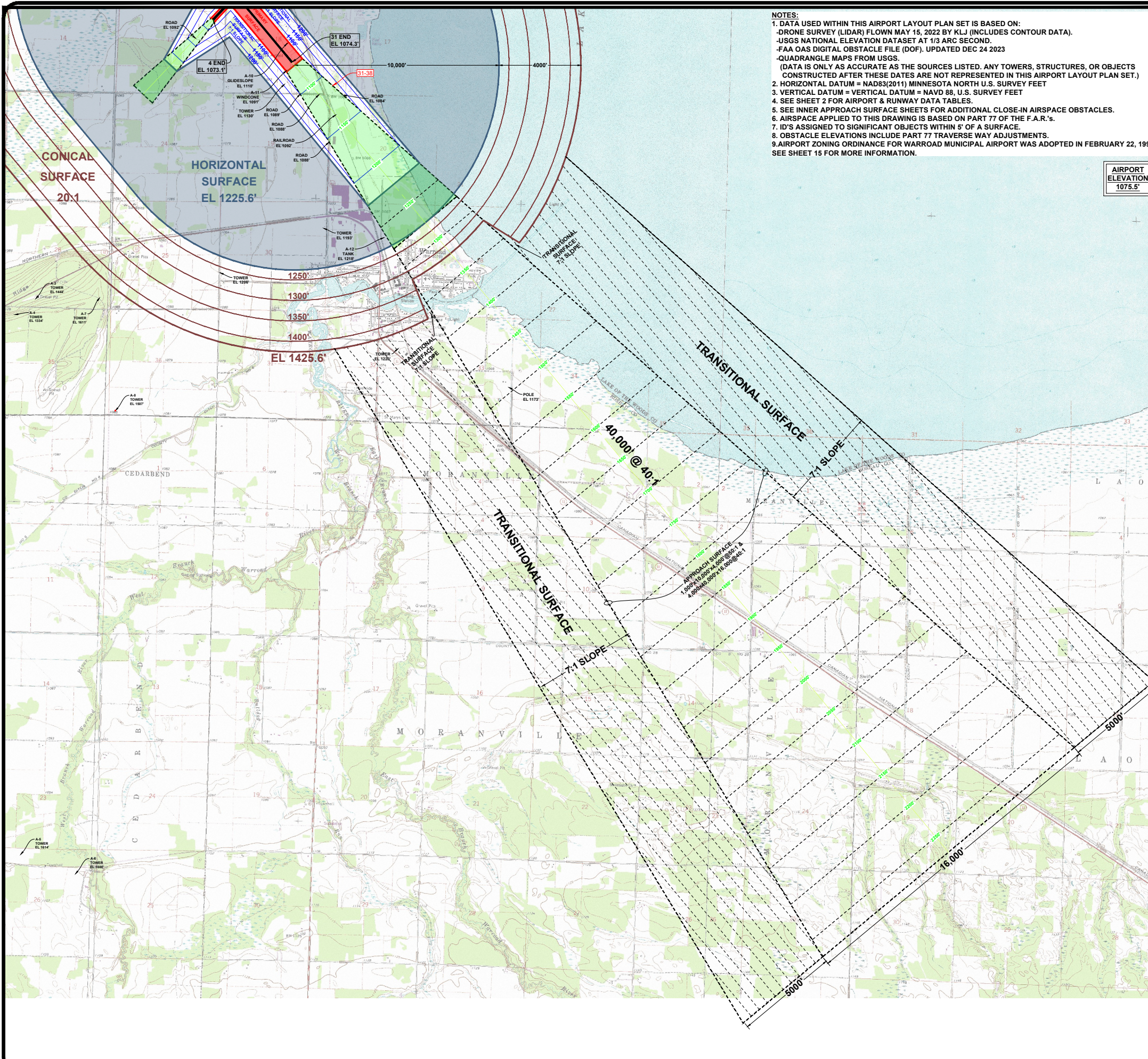
ISOMETRIC VIEW OF IMAGINARY SURFACES

DOF OBSTRUCTION TABLE						
ID	DESCRIPTION	ELEVATION	PART 77 SURFACE	PENETRATION VALUE	DISPOSITION	OAS NUMBER/ ASN
A-1	TOWER	1565'	EX-TRANSITIONAL	(420.0')	TO REMAIN	CA-000591

SEE INNER APPROACH SURFACE SHEETS FOR ADDITIONAL CLOSE-IN AIRSPACE OBSTACLES.
 #* = PENETRATES SURFACE (##) = BELOW SURFACE

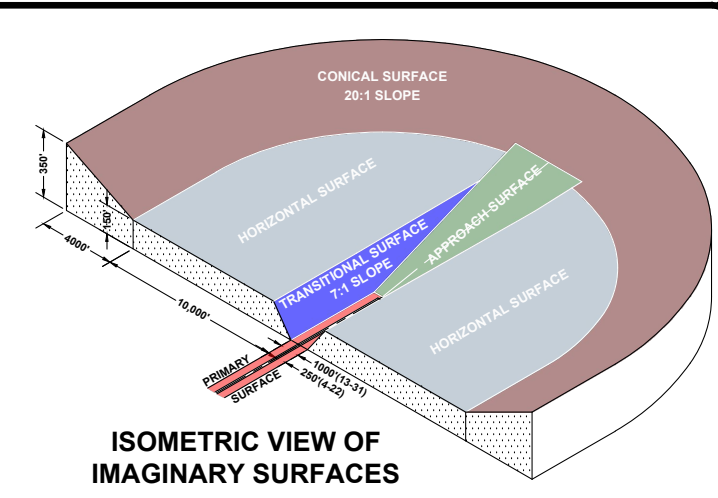


Rev.	Date	Description



- NOTES:**
1. DATA USED WITHIN THIS AIRPORT LAYOUT PLAN SET IS BASED ON:
 - DRONE SURVEY (LIDAR) FLOWN MAY 15, 2022 BY KLJ (INCLUDES CONTOUR DATA).
 - USGS NATIONAL ELEVATION DATASET AT 1/3 ARC SECOND.
 - FAA OAS DIGITAL OBSTACLE FILE (DOF), UPDATED DEC 24 2023
 - QUADRANGLE MAPS FROM USGS.
 (DATA IS ONLY AS ACCURATE AS THE SOURCES LISTED. ANY TOWERS, STRUCTURES, OR OBJECTS CONSTRUCTED AFTER THESE DATES ARE NOT REPRESENTED IN THIS AIRPORT LAYOUT PLAN SET.)
 2. HORIZONTAL DATUM = NAD83(2011) MINNESOTA NORTH U.S. SURVEY FEET
 3. VERTICAL DATUM = VERTICAL DATUM = NAVD 88, U.S. SURVEY FEET
 4. SEE SHEET 2 FOR AIRPORT & RUNWAY DATA TABLES.
 5. SEE INNER APPROACH SURFACE SHEETS FOR ADDITIONAL CLOSE-IN AIRSPACE OBSTACLES.
 6. AIRSPACE APPLIED TO THIS DRAWING IS BASED ON PART 77 OF THE F.A.R.'s.
 7. ID'S ASSIGNED TO SIGNIFICANT OBJECTS WITHIN 5' OF A SURFACE.
 8. OBSTACLE ELEVATIONS INCLUDE PART 77 TRAVERSE WAY ADJUSTMENTS.
 9. AIRPORT ZONING ORDINANCE FOR WARROAD MUNICIPAL AIRPORT WAS ADOPTED IN FEBRUARY 22, 1991. SEE SHEET 15 FOR MORE INFORMATION.

AIRPORT ELEVATION 1075.5'



ISOMETRIC VIEW OF IMAGINARY SURFACES

PT 77 (E & U) OBSTRUCTION TABLE

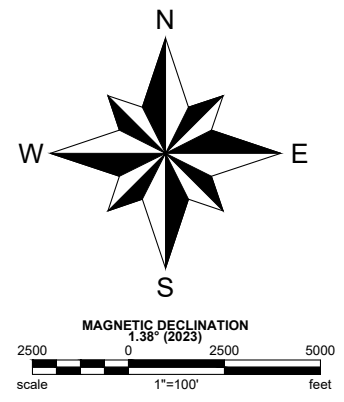
ID	DESCRIPTION	ELEVATION	AGL	PR	7:1 TR	50:1 PT 77 AP	DISPOSITION	TRIGGERING EVENT
31-38	TREE	1119'	-	-	3.4'	-	TRIMMED 2023	SEE NOTE 1

DRONE SURVEY (LIDAR) FLOWN MAY 15, 2022
 SURFACES: PR=PRIMARY TR=TRANSITIONAL PT77 AP=PART 77 APPROACH
 (#.#)=BELOW SURFACE #.#=PENETRATION VALUE
 NOTE 1: TRIMMED ON AUG. 28, 2023. OBJECT PENETRATION VALUES ARE PRIOR TO TRIMMING AND WILL BE UPDATED AS PART OF ALP AS-BUILT FOR TAXIWAY PROJECT.

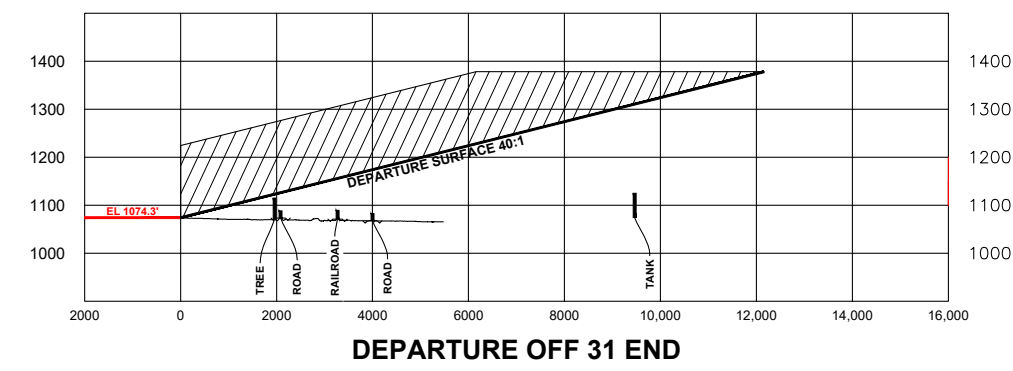
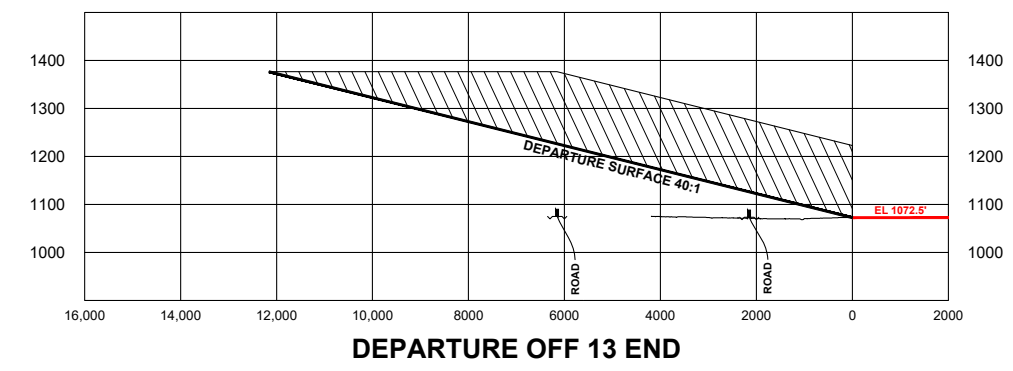
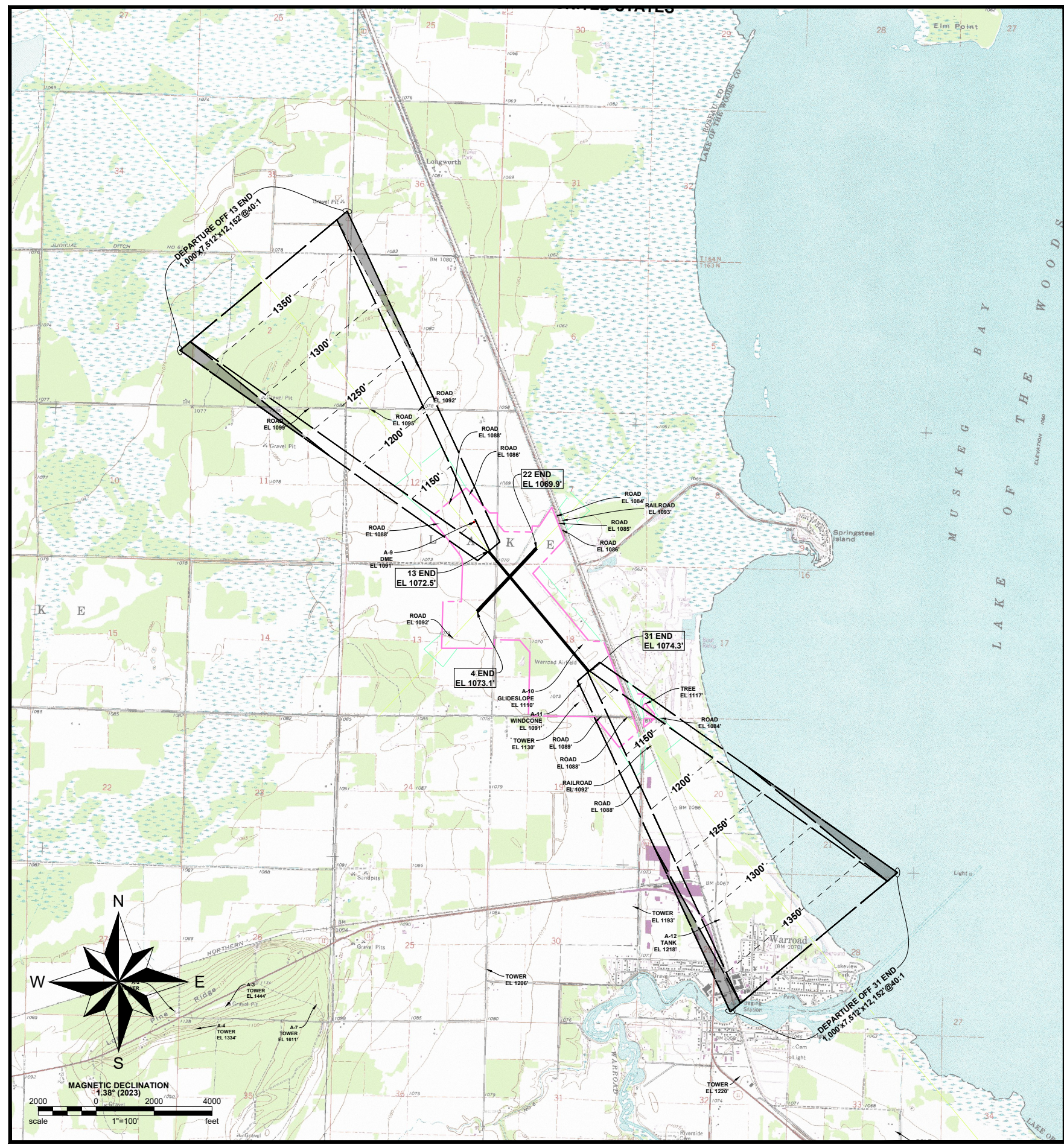
DOF OBSTRUCTION TABLE

ID	DESCRIPTION	ELEVATION	PART 77 SURFACE	PENETRATION VALUE	DISPOSITION	OAS NUMBER/ ASN
A-3	TOWER	1444'	N/A	-	TO REMAIN	27-000221
A-4	TOWER	1334'	N/A	-	TO REMAIN	27-000233
A-5	TOWER	1614'	N/A	-	TO REMAIN	0003_OE-600-OE 27-001115
A-6	TOWER	1600'	N/A	-	TO REMAIN	1994.AGL-1597-OE 27-001503
A-7	TOWER	1611'	N/A	-	TO REMAIN	2013.AGL-4823-OE 27-000453
A-8	TOWER	1507'	N/A	-	TO REMAIN	2017.AGL-21452-OE 27-001547
A-10	TOWER (GLIDE SLOPE)	1110'	PRIMARY	38.0'	TO REMAIN/ STUDY	2023.AGL-21285-OE 27-024605
A-11	POLE (WINDCONE)	1091'	PRIMARY	19.0'	TO REMAIN/ STUDY	27-000978 2006.AGL-4556-OE
A-12	TANK	1218'	HORIZONTAL	(7.0')	TO REMAIN	

SEE INNER APPROACH SURFACE SHEETS FOR ADDITIONAL CLOSE-IN AIRSPACE OBSTACLES.
 #.# = PENETRATES SURFACE (#.#) = BELOW SURFACE

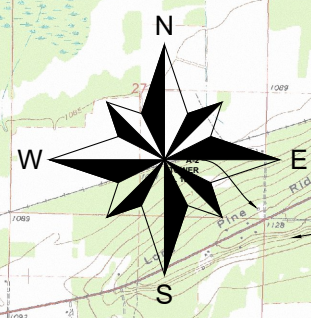


Rev.	Date	Description



DEPARTURE OBSTACLES TABLE					
OBSTACLE		CHARACTERISTICS			
ID	DESCRIPTION	PEAK ELEVATION	HEIGHT AGL	OBJECT PENETRATION	FUTURE DISPOSITION
NO OBSTRUCTION FOUND WITHIN SURVEY					
DRONE SURVEY (LIDAR) FLOWN MAY 15, 2022					
SEE INNER APPROACH SURFACE SHEETS FOR ADDITIONAL CLOSE-IN AIRSPACE OBSTACLES. (B)=BELOW SURFACE #=-PENETRATION VALUE					

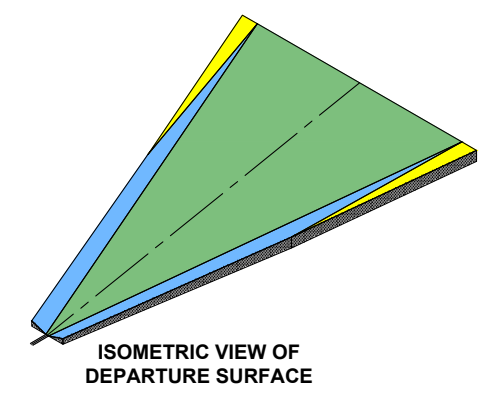
- NOTES:**
- DATA USED WITHIN THIS AIRPORT LAYOUT PLAN SET IS BASED ON:
 - DRONE SURVEY (LIDAR) FLOWN MAY 15, 2022 BY KLJ (INCLUDES CONTOUR DATA).
 - USGS NATIONAL ELEVATION DATASET AT 1/3 ARC SECOND.
 - FAA OAS DIGITAL OBSTACLE FILE (DOF), UPDATED DEC 24 2023
 - QUADRANGLE MAPS FROM USGS.
 (DATA IS ONLY AS ACCURATE AS THE SOURCES LISTED. ANY TOWERS, STRUCTURES, OR OBJECTS CONSTRUCTED AFTER THESE DATES ARE NOT REPRESENTED IN THIS AIRPORT LAYOUT PLAN SET.)
 - HORIZONTAL DATUM = NAD83(2011) MINNESOTA NORTH U.S. SURVEY FEET
 - VERTICAL DATUM = NAVD 88, U.S. SURVEY FEET
 - SEE SHEET 2 FOR AIRPORT & RUNWAY DATA TABLES.
 - ID'S ASSIGNED TO SIGNIFICANT OBJECTS WITHIN 5' OF A SURFACE.
 - RUNWAY 4-22 IS NOT AN INSTRUMENT RUNWAY.



MAGNETIC DECLINATION
 1.38° (2023)

scale 1"=100' feet

- EXISTING AIRPORT PROPERTY
- EXISTING AIRSPACE EASEMENT



Rev.	Date	Description



WARROAD INTERNATIONAL MEMORIAL AIRPORT
 CITY OF WARROAD (OWNER)
 WARROAD, MINNESOTA

TO BE USED AS A COMPLETE DRAWING SET FOR PLANNING PURPOSES ONLY, NOT FOR CONSTRUCTION

LAND USE DRAWING

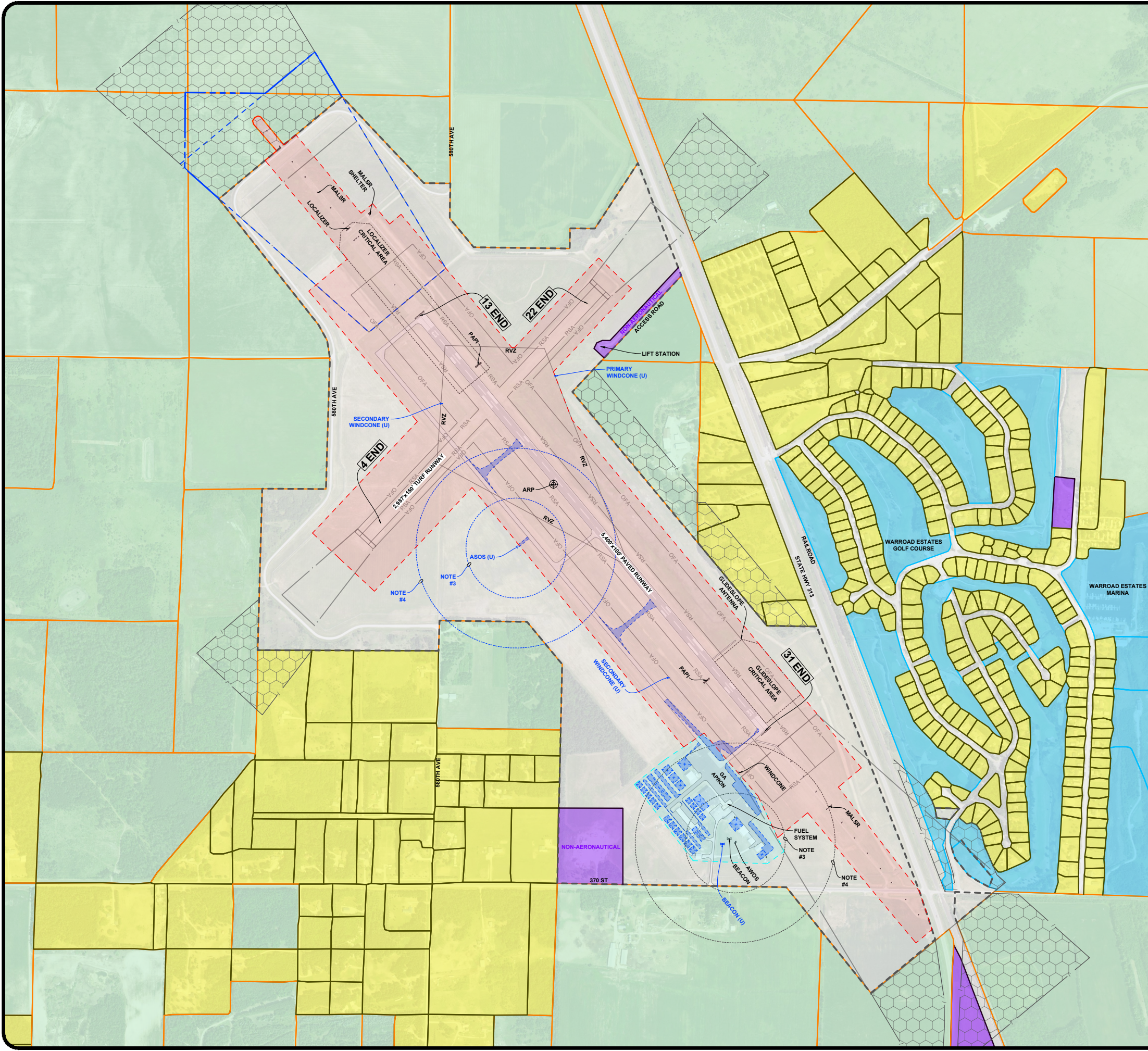
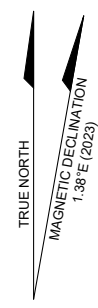
DRAFTED
 TLG
 REVIEWED
 ARTZ
 PROJECT NUMBER
 2205-00198

SHEET
14

NOTES:
 1. SEE SHEET 2 FOR AIRPORT & RUNWAY DATA TABLES.
 2. SEE INNER APPROACH SHEETS FOR OBSTACLE DATA.
 3. OBJECTS WITHIN 500' MUST REMAIN 15' BELOW WIND SENSOR.
 4. OBJECTS 500'-1000' MUST REMAIN 10' BELOW WIND SENSOR.
 5. CROP PRODUCTION: THERE IS NO EXISTING OR PLANNED AGRICULTURAL PRODUCTION ON AIRPORT PROPERTY. IF CROP PRODUCTION IS EVER CONSIDERED, CROP RESTRICTION BOUNDARIES WILL NEED TO BE ESTABLISHED ON THIS DRAWING.

LEGEND

- AGRICULTURE
- AIRFIELD LAND USE
- APRON AND HANGAR AREA
- PUBLIC
- RESIDENTIAL
- INDUSTRIAL
- EXISTING AVIATION EASEMENT
- ULTIMATE AVIATION EASEMENT
- ULTIMATE DEVELOPMENT
- REMOVAL
- EXISTING RPZ
- ULTIMATE RPZ
- EXISTING AIRPORT PROPERTY
- ULTIMATE AIRPORT PROPERTY
- OFA RUNWAY OBJECT FREE AREA (OFA)
- RSA RUNWAY SAFETY AREA (RSA)
- ULTIMATE RUNWAY OBJECT FREE AREA (OFA)
- ULTIMATE RUNWAY SAFETY AREA (RSA)





WARROD INTERNATIONAL MEMORIAL AIRPORT
CITY OF WARROD (OWNER)
WARROD, MINNESOTA

MNDOT LAND USE DRAWING

DRAFTED
TLG/MTK
REVIEWED
ARTZ
PROJECT NUMBER
2205-00198
SHEET
15

TO BE USED AS A COMPLETE DRAWING SET FOR PLANNING PURPOSES ONLY, NOT FOR CONSTRUCTION

NOTES:
1. SEE SHEET 2 FOR AIRPORT & RUNWAY DATA TABLES.
2. THERE IS A DISCREPANCY BETWEEN THE AIRPORT ZONING ORDINANCE AND THE AIRPORT ZONING MAP AVAILABLE ON MNDOT WEBSITE. SAFETY ZONES ON THIS SHEET ARE DEPICTED BASED ON THE ZONING ORDINANCE TEXT AND PREVIOUS ALP APPROVED ON 21 DEC 2012

AIRPORT SAFETY ZONING ORDINANCE FOR WARROD MUNICIPAL AIRPORT
ADOPTED: FEBRUARY 22, 1991

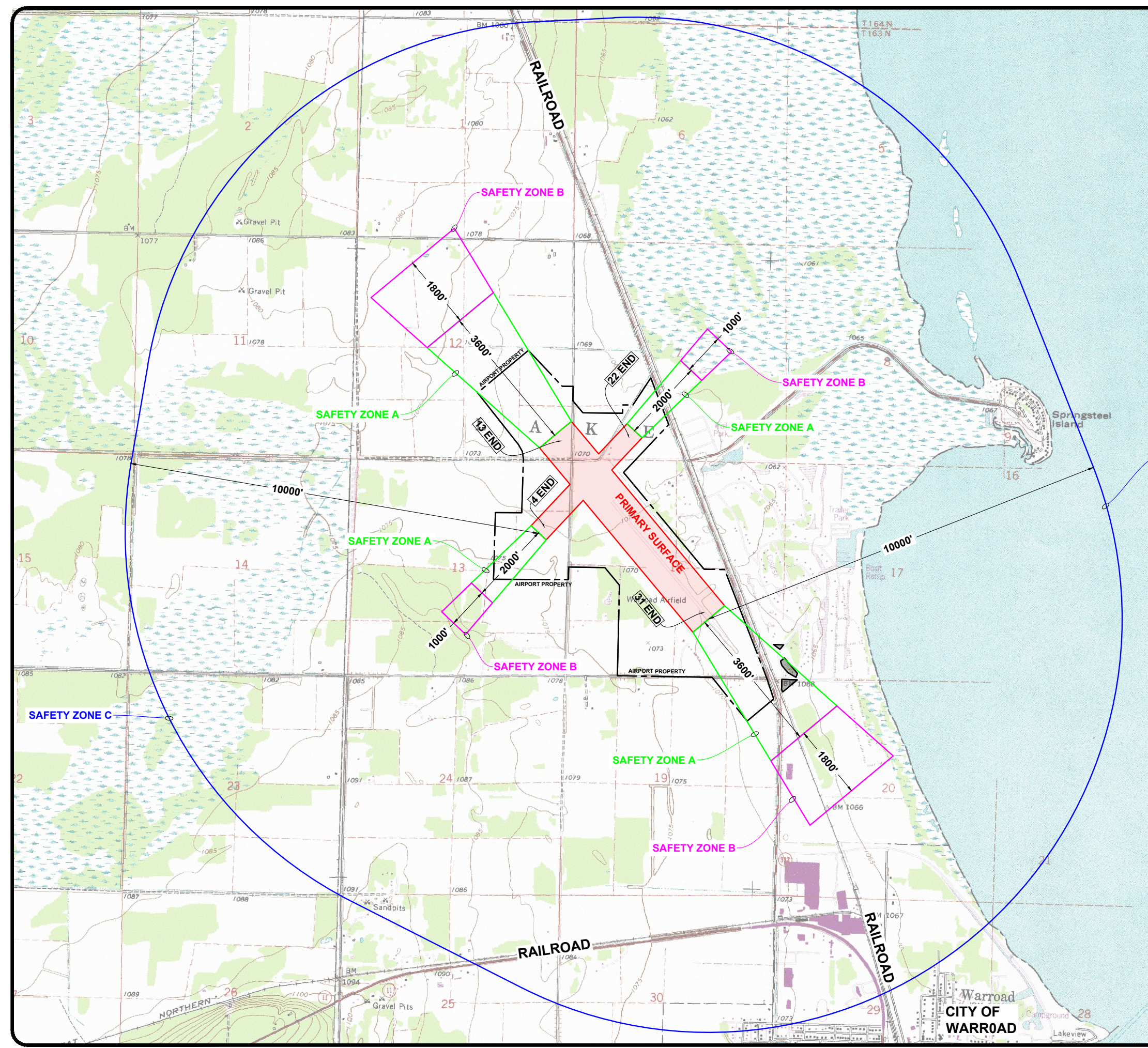
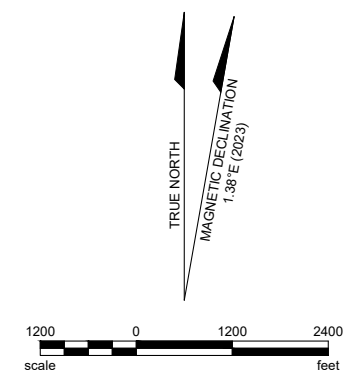
GENERAL RESTRICTIONS
NO USE SHALL BE MADE OF ANY LAND IN ANY OF THE SAFETY ZONES WHICH CREATES OR CAUSES INTERFERENCE WITH THE OPERATION OF RADIO OR ELECTRONIC FACILITIES ON THE AIRPORT OR WITH RADIO OR ELECTRONIC COMMUNICATIONS BETWEEN THE AIRPORT AND AIRCRAFT, MAKES IT DIFFICULT FOR PILOTS TO DISTINGUISH BETWEEN AIRPORT LIGHTS AND OTHER LIGHTS, RESULTS IN GLARE IN THE EYES OF PILOTS USING THE AIRPORT, IMPAIRS VISIBILITY IN THE VICINITY OF THE AIRPORT, OR OTHERWISE ENDANGERS THE LANDING, TAKE OFF, OR MANEUVERING OF AIRCRAFT.

SAFETY ZONE "A"
SHALL CONTAIN NO BUILDINGS, TEMPORARY STRUCTURES, EXPOSED TRANSMISSION LINES, OR OTHER SIMILAR LAND USE STRUCTURAL HAZARDS, AND SHALL BE RESTRICTED TO THOSE USES WHICH WILL NOT CREATE, ATTRACT, OR BRING TOGETHER AN ASSEMBLY OF PERSONS THEREON. PERMITTED USES MAY INCLUDE AGRICULTURE, LIGHT OUTDOOR RECREATION (NONSPPECTATOR), CEMETERIES, AND AUTO PARKING.

SAFETY ZONE "B"
SHALL BE RESTRICTED IN USE AS FOLLOWS. EACH USE SHALL BE ON A SITE WHOSE AREA SHALL NOT BE LESS THAN THREE ACRES. EACH USE SHALL NOT CREATE, ATTRACT, OR BRING TOGETHER A SITE POPULATION THAT WOULD EXCEED 15 TIMES THAT OF THE SITE ACREAGE. EACH SITE SHALL HAVE NO MORE THAN ONE BUILDING PLOT UPON WHICH ANY NUMBER OF STRUCTURES MAY BE ERECTED.
THE FOLLOWING USES ARE SPECIFICALLY PROHIBITED IN ZONE "B":
CHURCHES, HOSPITALS, SCHOOLS, THEATERS, STADIUMS, HOTELS AND MOTELS, TRAILER COURTS, CAMP GROUNDS, AND OTHER PLACES OF PUBLIC OR SEMIPUBLIC ASSEMBLY.

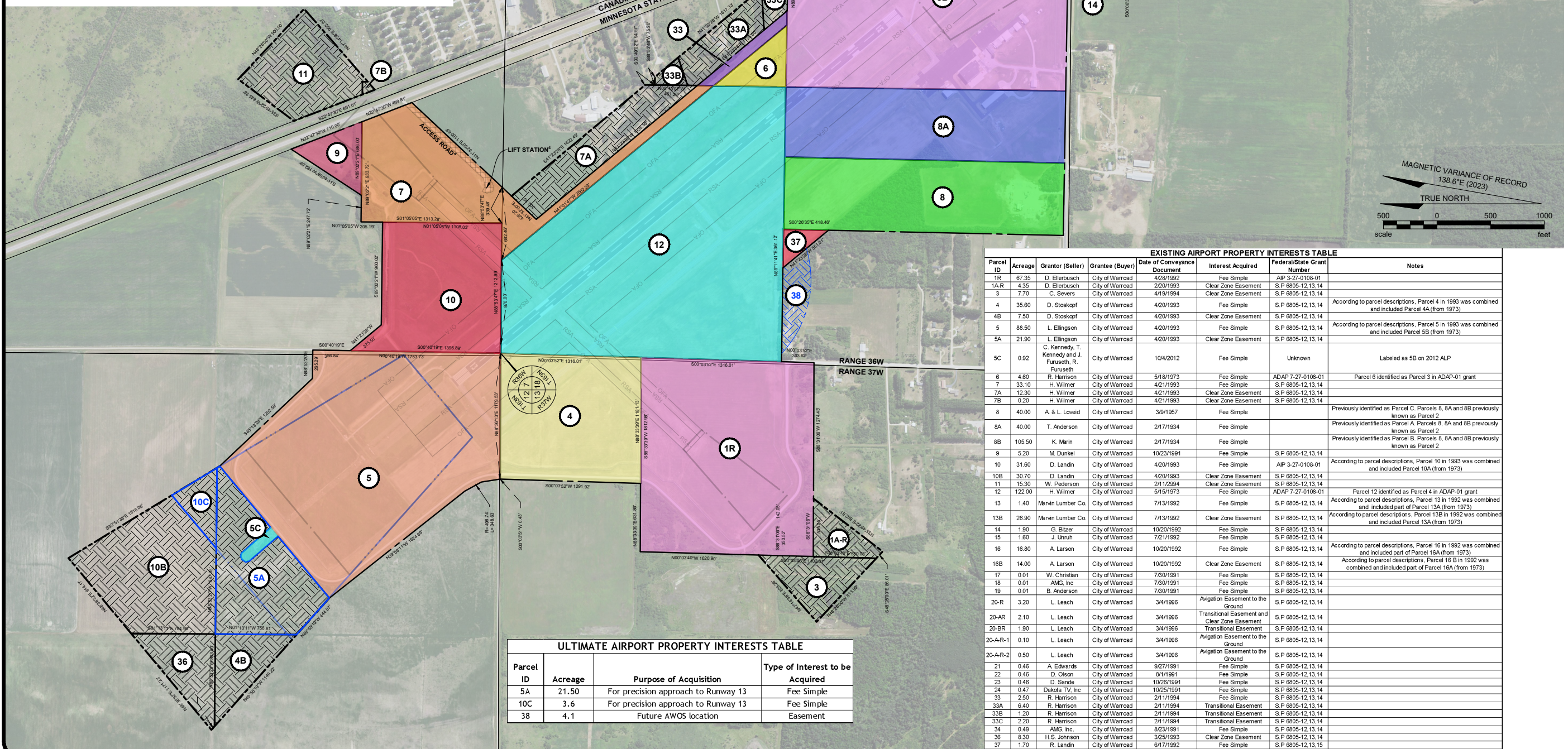
SAFETY ZONE "C"
IS SUBJECT ONLY TO THE GENERAL RESTRICTIONS. SAFETY ZONE "C" IS ENCLOSED WITHIN THE PERIMETER OF THE HORIZONTAL ZONE.

- ROSEAU COUTNY ZONE DISTRICTS**
- FAM = FOREST AGRICULTURAL MANAGEMENT
 - IND = INDUSTRIAL
 - MUNS = MULTIPLE USE
 - RES = RESIDENTIAL
 - SMU = SHORLINE/MIXED USE





- NOTES:**
1. THE PURPOSE OF THIS DRAWING IS TO PROVIDE INFORMATION FOR ANALYZING THE CURRENT AND FUTURE USE OF PROPERTY ACQUIRED.
 2. THIS AIRPORT PROPERTY MAP DRAWING IS FOR PLANNING PURPOSES ONLY AND IS NOT SURVEY-LEVEL ACCURACY.
 3. DATA SOURCE: PREVIOUS ALP APPROVED 21 DEC 2012
 4. EASEMENT TO CITY OF WARROD, PUBLIC UTILITIES. FAA LACKS ALP AND LAND USE APPROVAL AUTHORITY PER FAA SECTION 163 DETERMINATION LETTER TO THE SPONSOR DATED 9/23/19.
 5. PARCELS NUMBERS ON THIS AIRPORT PROPERTY MAP MAY NOT BE CONSISTENT WITH FEDERAL GRANT DESCRIPTIONS. CONFIRM ALL PARCEL NUMBERS IN THE NEXT EXHIBIT A UPDATE.
 6. CLEAR ZONE EASEMENTS ACQUIRED UNDER ADAP 7-27-0108-01 WERE IDENTIFIED AT THE TIME AS PARCELS 1, 2, 8A, 8B, AND 10. MOST OF THESE INTERESTS HAVE BEEN SUPERSEDED WITH FEE ACQUISITION. IDENTIFY FEDERALLY FUNDED CLEAR ZONE PARCEL ACQUISITION BOUNDARIES AND RIGHTS THAT CURRENTLY EXIST IN THE NEXT EXHIBIT A UPDATE.



ULTIMATE AIRPORT PROPERTY INTERESTS TABLE

Parcel ID	Acreage	Purpose of Acquisition	Type of Interest to be Acquired
5A	21.50	For precision approach to Runway 13	Fee Simple
10C	3.6	For precision approach to Runway 13	Fee Simple
38	4.1	Future AWOS location	Easement

EXISTING AIRPORT PROPERTY INTERESTS TABLE

Parcel ID	Acreage	Grantor (Seller)	Grantee (Buyer)	Date of Conveyance Document	Interest Acquired	Federal/State Grant Number	Notes
1R	67.35	D. Ellerbusch	City of Warroad	4/28/1992	Fee Simple	AP 3-27-0108-01	
1A-R	4.35	D. Ellerbusch	City of Warroad	2/20/1993	Clear Zone Easement	S.P. 6805-12.13.14	
3	7.70	C. Sewers	City of Warroad	4/19/1994	Clear Zone Easement	S.P. 6805-12.13.14	
4	35.60	D. Stoskopf	City of Warroad	4/20/1993	Fee Simple	S.P. 6805-12.13.14	According to parcel descriptions, Parcel 4 in 1993 was combined and included Parcel 4A (from 1973)
4B	7.50	D. Stoskopf	City of Warroad	4/20/1993	Clear Zone Easement	S.P. 6805-12.13.14	
5	88.50	L. Ellingson	City of Warroad	4/20/1993	Fee Simple	S.P. 6805-12.13.14	According to parcel descriptions, Parcel 5 in 1993 was combined and included Parcel 5B (from 1973)
5A	21.50	L. Ellingson	City of Warroad	4/20/1993	Clear Zone Easement	S.P. 6805-12.13.14	
5C	0.92	C. Kennedy, T. Kennedy and J. Furuseth, R. Furuseth	City of Warroad	10/4/2012	Fee Simple	Unknown	Labeled as 5B on 2012 ALP
6	4.60	R. Harrison	City of Warroad	5/18/1973	Fee Simple	ADAP 7-27-0108-01	Parcel 6 identified as Parcel 3 in ADAP-01 grant
7	33.10	H. Wilmer	City of Warroad	4/21/1993	Fee Simple	S.P. 6805-12.13.14	
7A	12.30	H. Wilmer	City of Warroad	4/21/1993	Clear Zone Easement	S.P. 6805-12.13.14	
7B	0.20	H. Wilmer	City of Warroad	4/21/1993	Clear Zone Easement	S.P. 6805-12.13.14	
8	40.00	A. & L. Loveld	City of Warroad	3/9/1957	Fee Simple		Previously identified as Parcel C. Parcels 8, 8A and 8B previously known as Parcel 2
8A	40.00	T. Anderson	City of Warroad	2/17/1934	Fee Simple		Previously identified as Parcel A. Parcels 8, 8A and 8B previously known as Parcel 2
8B	105.50	K. Marin	City of Warroad	2/17/1934	Fee Simple		Previously identified as Parcel B. Parcels 8, 8A and 8B previously known as Parcel 2
9	5.20	M. Dunkel	City of Warroad	10/23/1991	Fee Simple	S.P. 6805-12.13.14	
10	31.60	D. Landin	City of Warroad	4/20/1993	Fee Simple	AP 3-27-0108-01	According to parcel descriptions, Parcel 10 in 1993 was combined and included Parcel 10A (from 1973)
10B	30.70	D. Landin	City of Warroad	4/20/1993	Clear Zone Easement	S.P. 6805-12.13.14	
11	15.30	W. Pederson	City of Warroad	2/11/2994	Clear Zone Easement	S.P. 6805-12.13.14	
12	122.00	H. Wilmer	City of Warroad	5/15/1973	Fee Simple	ADAP 7-27-0108-01	Parcel 12 identified as Parcel 4 in ADAP-01 grant
13	1.40	Marvin Lumber Co	City of Warroad	7/13/1992	Fee Simple	S.P. 6805-12.13.14	According to parcel descriptions, Parcel 13 in 1992 was combined and included part of Parcel 13A (from 1973)
13B	26.90	Marvin Lumber Co	City of Warroad	7/13/1992	Clear Zone Easement	S.P. 6805-12.13.14	According to parcel descriptions, Parcel 13B in 1992 was combined and included Parcel 13A (from 1973)
14	1.90	G. Bltzer	City of Warroad	10/20/1992	Fee Simple	S.P. 6805-12.13.14	
15	1.60	J. Unruh	City of Warroad	7/21/1992	Fee Simple	S.P. 6805-12.13.14	
16	16.80	A. Larson	City of Warroad	10/20/1992	Fee Simple	S.P. 6805-12.13.14	According to parcel descriptions, Parcel 16 in 1992 was combined and included part of Parcel 16A (from 1973)
16B	14.00	A. Larson	City of Warroad	10/20/1992	Clear Zone Easement	S.P. 6805-12.13.14	According to parcel descriptions, Parcel 16 B in 1992 was combined and included part of Parcel 16A (from 1973)
17	0.01	W. Christian	City of Warroad	7/30/1991	Fee Simple	S.P. 6805-12.13.14	
18	0.01	AMG, Inc	City of Warroad	7/30/1991	Fee Simple	S.P. 6805-12.13.14	
19	0.01	B. Anderson	City of Warroad	7/30/1991	Fee Simple	S.P. 6805-12.13.14	
20-R	3.20	L. Leach	City of Warroad	3/4/1996	Avigation Easement to the Ground	S.P. 6805-12.13.14	
20-AR	2.10	L. Leach	City of Warroad	3/4/1996	Transitional Easement and Clear Zone Easement	S.P. 6805-12.13.14	
20-BR	1.90	L. Leach	City of Warroad	3/4/1996	Transitional Easement	S.P. 6805-12.13.14	
20-AR-1	0.10	L. Leach	City of Warroad	3/4/1996	Avigation Easement to the Ground	S.P. 6805-12.13.14	
20-AR-2	0.50	L. Leach	City of Warroad	3/4/1996	Avigation Easement to the Ground	S.P. 6805-12.13.14	
21	0.46	A. Edwards	City of Warroad	9/27/1991	Fee Simple	S.P. 6805-12.13.14	
22	0.46	D. Olson	City of Warroad	8/1/1991	Fee Simple	S.P. 6805-12.13.14	
23	0.46	D. Sande	City of Warroad	10/26/1991	Fee Simple	S.P. 6805-12.13.14	
24	0.47	Dakota TV, Inc	City of Warroad	10/25/1991	Fee Simple	S.P. 6805-12.13.14	
33	2.50	R. Harrison	City of Warroad	2/11/1994	Fee Simple	S.P. 6805-12.13.14	
33A	8.40	R. Harrison	City of Warroad	2/11/1994	Transitional Easement	S.P. 6805-12.13.14	
33B	1.20	R. Harrison	City of Warroad	2/11/1994	Transitional Easement	S.P. 6805-12.13.14	
33C	2.20	R. Harrison	City of Warroad	2/11/1994	Transitional Easement	S.P. 6805-12.13.14	
34	0.49	AMG, Inc	City of Warroad	8/23/1991	Fee Simple	S.P. 6805-12.13.14	
36	8.30	H.S. Johnson	City of Warroad	3/25/1993	Clear Zone Easement	S.P. 6805-12.13.14	
37	1.70	R. Landin	City of Warroad	6/17/1992	Fee Simple	S.P. 6805-12.13.15	

WARROD INTERNATIONAL MEMORIAL AIRPORT
CITY OF WARROD (OWNER)
WARROD, MINNESOTA

AIRPORT PROPERTY MAP

DRAFTED
MTK/AES
REVIEWED
ARTZ
PROJECT NUMBER
2205-00198

SHEET
16

© KLJ 2023

TO BE USED AS A COMPLETE DRAWING SET FOR PLANNING PURPOSES ONLY, NOT FOR CONSTRUCTION